



SCD

RaceReport vom 16.12.2010

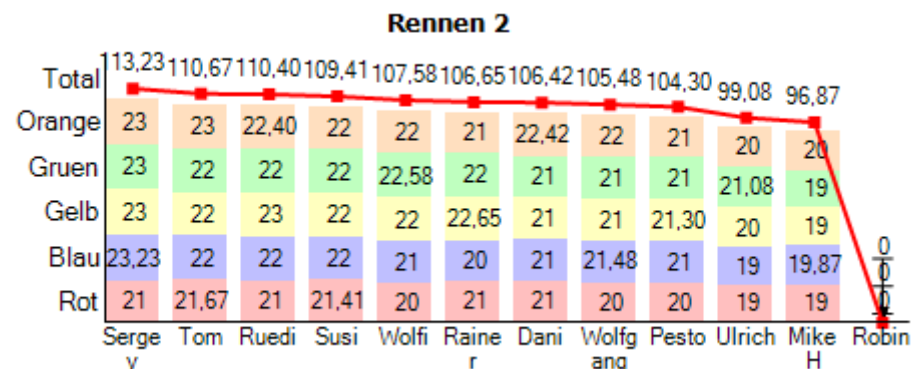
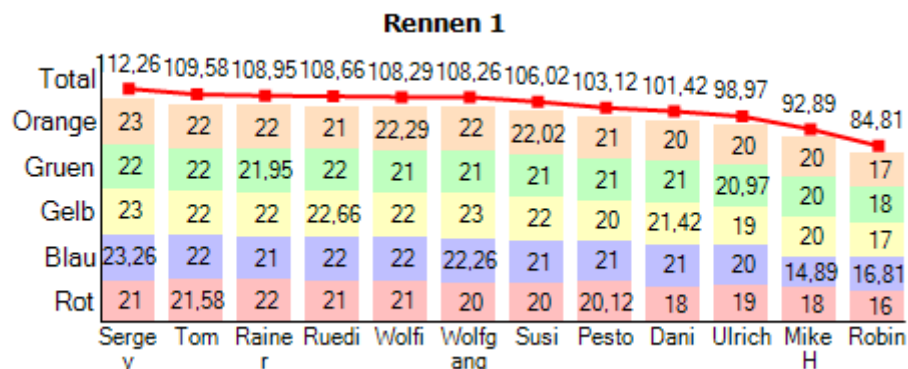
'MINI-Z Rennen Nr. 12'

Bahn: SCD Holz (40,23m)

Quali									Gesamtergebnis								
Fahrer	P	S	Rd	Min	ΔP1	ΔPN	Max	Ø	Fahrer	P	S	Rd	ΔP1	ΔPN	Min	Max	Ø
Sergey	1	1	5,00	7,715			7,959	7,777	Sergey	1	10	225,49			7,762	10,815	7,869
Tom	2	1	5,00	7,736	+0,021	+0,021	8,042	7,848	Tom	2	10	220,25	-5,24	-5,24	7,858	12,010	8,044
Ruedi	3	1	6,00	7,832	+0,117	+0,096	9,901	8,298	Ruedi	3	10	219,06	-6,43	-1,19	7,864	11,810	8,068
Wolfi	4	1	7,00	7,852	+0,137	+0,020	10,882	8,352	Wolfi	4	10	215,87	-9,62	-3,19	7,893	11,971	8,267
Rainer	5	1	6,00	7,884	+0,169	+0,032	12,057	8,842	Rainer	5	10	215,60	-9,89	-0,27	7,967	13,591	8,237
Wolfgang	6	1	6,00	7,932	+0,217	+0,048	9,844	8,315	Susi	6	10	215,43	-10,06	-0,17	8,013	12,811	8,686
Pesto	7	1	4,00	8,105	+0,390	+0,173	10,120	8,632	Wolfgang	7	10	213,74	-11,75	-1,69	8,012	85,548	9,104
Dani	8	1	5,00	8,123	+0,408	+0,018	8,171	8,154	Dani	8	10	207,84	-17,65	-5,90	7,958	70,553	9,212
Susi	9	1	7,00	8,183	+0,468	+0,060	9,070	8,424	Pesto	9	10	207,42	-18,07	-0,42	8,110	70,595	9,389
Ulrich	10	1	6,00	8,546	+0,831	+0,363	10,561	8,902	Ulrich	10	10	198,05	-27,44	-9,37	8,399	90,047	10,060
MikeH	11	1	6,00	8,679	+0,964	+0,133	11,449	9,202	MikeH	11	10	189,76	-35,73	-8,29	8,507	86,418	10,410
Robin	12	1	5,00	9,905	+2,190	+1,226	14,452	11,162	Robin	12	5	84,81	-140,68	-104,95	9,113	17,069	11,531

Rennen 1									Rennen 2								
Fahrer	P	S	Rd	ΔP1	ΔPN	Min	Max	Ø	Fahrer	P	S	Rd	ΔP1	ΔPN	Min	Max	Ø
Sergey	1	5	112,26			7,799	10,815	8,234	Sergey	1	5	113,23			7,762	10,310	8,120
Tom	2	5	109,58	-2,68	-2,68	7,858	12,010	8,403	Tom	2	5	110,67	-2,56	-2,56	7,880	10,622	8,390
Rainer	3	5	108,95	-3,31	-0,63	7,967	11,430	8,547	Ruedi	3	5	110,40	-2,83	-0,27	7,864	11,569	8,378
Ruedi	4	5	108,66	-3,60	-0,29	7,882	11,810	8,456	Susi	4	5	109,41	-3,82	-0,99	8,013	11,956	8,825
Wolfi	5	5	108,29	-3,97	-0,37	7,893	10,985	8,558	Wolfi	5	5	107,58	-5,65	-1,83	8,023	11,971	8,686
Wolfgang	6	5	108,26	-4,00	-0,03	8,059	85,548	9,893	Rainer	6	5	106,65	-6,58	-0,93	7,975	13,591	8,696
Susi	7	5	106,02	-6,24	-2,24	8,180	12,811	9,260	Dani	7	5	106,42	-6,81	-0,23	7,958	70,553	9,471
Pesto	8	5	103,12	-9,14	-2,90	8,110	15,166	9,466	Wolfgang	8	5	105,48	-7,75	-0,94	8,012	13,339	9,078
Dani	9	5	101,42	-10,84	-1,70	8,207	26,847	9,779	Pesto	9	5	104,30	-8,93	-1,18	8,216	70,595	10,103
Ulrich	10	5	98,97	-13,29	-2,45	8,399	90,047	10,735	Ulrich	10	5	99,08	-14,15	-5,22	8,412	70,811	10,351
MikeH	11	5	92,89	-19,37	-6,08	8,662	86,418	11,417	MikeH	11	5	96,87	-16,36	-2,21	8,507	73,028	10,550
Robin	12	5	84,81	-27,45	-8,08	9,113	17,069	11,531									

Rundenübersicht



Top 20 Statistiken

Schnellste Runde total				Bereinigter Durchschnitt				Bereinigte Standardabweichung ³				Anomalien ²		Ampelstart			Chaossituationen Stintwechsel			
Min	Fahrer	Zeit	B	bØ	Fahrer	Zeit	B	bσ	Fahrer	Zeit	B	Anzahl	Fahrer	Min	Fahrer	Zeit	Chaos	Stint	Anz.	Anz.
7,762	Sergey	23:03	Or	7,866	Sergey	21:57	Gr	0,023	Tom	22:58	Or	1	Tom	0,190	Dani	22:20	Anz.	70	Anz.	22
7,766	Sergey	23:04	Or	7,885	Sergey	21:53	Or	0,032	Sergey	22:58	Ge	4	Ruedi	0,195	Wolfgang	22:20	Min	2s	Min	0,7m
7,771	Sergey	23:03	Or	7,899	Sergey	23:02	Or	0,033	Ruedi	22:00	Ge	5	Rainer	0,204	Sergey	21:45	Max	75s	Max	16,0m
7,783	Sergey	23:04	Or	7,901	Sergey	22:58	Ge	0,035	Sergey	21:57	Gr	5	Wolfi	0,216	Rainer	21:45	Ø	15s	Ø	2,8m
7,786	Sergey	23:04	Or	7,924	Sergey	23:06	Gr	0,041	Sergey	21:53	Or	11	Wolfgang	0,225	Rainer	22:54	-	-	-	-
7,788	Sergey	23:02	Or	7,945	Tom	22:58	Or	0,047	Ruedi	23:10	Or	12	Susi	0,240	Susi	22:20	-	-	-	-
7,790	Sergey	23:05	Or	7,984	Ruedi	22:00	Ge	0,061	Rainer	21:53	Ge	16	Pesto	0,257	Pesto	22:20	-	-	-	-
7,795	Sergey	23:07	Gr	8,035	Ruedi	23:10	Or	0,068	Rainer	21:45	Bl	19	Dani	0,264	Sergey	22:54	-	-	-	-
7,795	Sergey	23:07	Gr	8,052	Tom	21:53	Gr	0,068	Ruedi	22:58	Bl	24	Ulrich	0,287	Ruedi	21:45	-	-	-	-
7,797	Sergey	23:07	Gr	8,054	Ruedi	22:54	Gr	0,070	Wolfi	22:54	Bl	37	Robin	0,290	Wolfi	22:54	-	-	-	-
7,798	Sergey	23:08	Gr	8,069	Tom	23:02	Gr	0,071	Wolfi	23:06	Or	37	MikeH	0,291	Ruedi	22:54	-	-	-	-
7,799	Sergey	23:03	Or	8,075	Tom	22:54	Ge	0,090	Tom	21:57	Bl	-	-	0,341	Dani	21:03	-	-	-	-
7,799	Sergey	21:57	Gr	8,101	Rainer	21:53	Ge	0,098	Rainer	21:57	Or	-	-	0,410	Ulrich	22:20	-	-	-	-
7,800	Sergey	23:05	Or	8,103	Ruedi	21:49	Gr	0,105	Wolfi	22:58	Ro	-	-	0,433	Wolfi	21:45	-	-	-	-
7,802	Sergey	23:04	Or	8,115	Tom	21:45	Ge	0,106	Tom	22:00	Ro	-	-	0,497	Tom	22:54	-	-	-	-
7,804	Sergey	23:08	Gr	8,116	Ruedi	22:58	Bl	0,125	Tom	21:53	Gr	-	-	0,502	Pesto	21:03	-	-	-	-
7,807	Sergey	23:04	Or	8,136	Sergey	21:49	Ge	0,129	Susi	21:25	Ro	-	-	0,508	Wolfgang	21:03	-	-	-	-
7,808	Sergey	23:04	Or	8,137	Wolfi	23:06	Or	0,304	Rainer	23:02	Bl	-	-	0,546	Ulrich	21:03	-	-	-	-
7,811	Sergey	21:57	Gr	8,138	Sergey	23:10	Bl	0,317	Rainer	23:06	Ro	-	-	0,553	Susi	21:03	-	-	-	-
7,813	Sergey	23:02	Or	8,140	Rainer	21:57	Or	0,338	MikeH	21:25	Or	-	-	0,589	Tom	21:45	-	-	-	-

Top 10 Schnellste Runde pro Spur

Rot			Blau			Gelb			Gruen			Orange		
Min	Fahrer	Zeit	Min	Fahrer	Zeit	Min	Fahrer	Zeit	Min	Fahrer	Zeit	Min	Fahrer	Zeit
8,125	Sergey	22:56	7,985	Sergey	23:12	7,817	Sergey	21:49	7,795	Sergey	23:07	7,762	Sergey	23:03
8,131	Sergey	21:45	8,019	Sergey	23:11	7,834	Sergey	21:49	7,795	Sergey	23:07	7,766	Sergey	23:04
8,136	Sergey	22:55	8,019	Sergey	23:13	7,854	Sergey	21:50	7,797	Sergey	23:07	7,771	Sergey	23:03
8,146	Sergey	22:56	8,020	Sergey	23:13	7,855	Sergey	22:59	7,798	Sergey	23:08	7,783	Sergey	23:04
8,148	Sergey	21:47	8,022	Sergey	23:11	7,857	Sergey	22:59	7,799	Sergey	21:57	7,786	Sergey	23:04
8,149	Sergey	21:45	8,025	Sergey	23:13	7,858	Tom	21:46	7,804	Sergey	23:08	7,788	Sergey	23:02
8,151	Sergey	21:47	8,025	Sergey	23:13	7,859	Sergey	21:49	7,811	Sergey	21:57	7,790	Sergey	23:05
8,152	Sergey	22:55	8,032	Sergey	23:11	7,868	Sergey	22:59	7,821	Sergey	21:58	7,799	Sergey	23:03
8,157	Sergey	22:56	8,038	Sergey	23:12	7,869	Sergey	22:59	7,822	Sergey	23:07	7,800	Sergey	23:05
8,164	Sergey	22:55	8,039	Ruedi	23:00	7,872	Sergey	22:59	7,823	Sergey	23:07	7,802	Sergey	23:04

Stints

21:03	B	Auto	Rd	Min	Max	Ø	95% ¹	σ ³	Anomalien ²	bØ	b95%	bσ
Susi	Gr	Posche 962	21	8,180	12,573	9,286	11,632	1,302	2/10%	8,989	10,418	0,909
Wolfgang	Ro	Mazda	20	8,283	13,701	9,630	10,969	1,376	1/5%	9,416	10,680	1,002
Pesto	Ge	Mazda	20	8,110	15,166	9,647	13,077	1,908	5/25%	8,643	10,325	0,896
Ulrich	Bl	Nissan	20	8,590	13,417	9,909	13,245	1,304	3/15%	9,424	10,902	0,920

Dani	Or	Mazda	20	8,207	15,800	9,964	15,649	2,348	5/25%	8,744	10,430	0,800
21:08	B	Auto	Rd	Min	Max	Ø	95%¹	σ³	Anomalien²	bØ	b95%	bσ
Pesto	Or	Mazda	21	8,405	10,775	9,185	10,624	0,941	0/0%	9,185	10,624	0,941
Wolfgang	Ge	Mazda	23	8,059	10,426	8,691	10,398	0,895	0/0%	8,691	10,398	0,895
Susi	Bl	Posche 962	21	8,424	11,287	9,254	11,111	1,010	3/15%	8,922	10,553	0,792
Dani	Gr	Mazda	21	8,223	11,506	9,009	10,492	1,057	1/5%	8,878	10,433	0,906
Robin	Ro	Aston	16	9,764	16,188	11,921	14,104	1,852	8/50%	10,358	10,798	-
21:14	B	Auto	Rd	Min	Max	Ø	95%¹	σ³	Anomalien²	bØ	b95%	bσ
Pesto	Gr	Mazda	21	8,333	13,888	9,032	10,580	1,357	1/5%	8,777	10,477	0,759
Dani	Bl	Mazda	21	8,472	11,851	9,176	11,684	1,152	2/10%	8,888	10,643	0,790
Wolfgang	Or	Mazda	22	8,134	10,372	8,773	10,263	0,882	0/0%	8,773	10,263	0,882
Robin	Ge	Aston	17	9,507	13,650	10,799	13,623	1,278	6/38%	9,777	10,642	-
MikeH	Ro	Ferrari	18	8,979	14,437	10,067	14,358	1,801	3/17%	9,321	9,813	0,479
21:20	B	Auto	Rd	Min	Max	Ø	95%¹	σ³	Anomalien²	bØ	b95%	bσ
MikeH	Ge	Ferrari	20	8,662	86,418	13,633	15,845	17,669	3/16%	9,105	10,766	0,679
Pesto	Bl	Mazda	21	8,466	10,783	9,214	10,768	0,982	0/0%	9,214	10,768	0,982
Robin	Or	Aston	17	9,500	15,681	11,347	14,147	1,894	6/38%	10,093	10,947	-
Ulrich	Ro	Nissan	19	8,944	90,047	14,251	12,203	1,112	5/28%	9,206	9,585	0,343
Wolfgang	Gr	Mazda	21	8,103	85,548	12,642	10,496	0,927	1/5%	8,804	10,348	0,945
21:25	B	Auto	Rd	Min	Max	Ø	95%¹	σ³	Anomalien²	bØ	b95%	bσ
Wolfgang	Bl	Mazda	22	8,275	12,881	9,080	10,571	1,150	1/5%	8,890	10,553	0,748
MikeH	Or	Ferrari	20	8,728	13,459	10,032	13,126	1,541	5/26%	9,215	10,025	0,338
Robin	Gr	Aston	18	9,364	14,662	10,978	14,002	1,540	7/41%	9,760	10,767	-
Susi	Ro	Posche 962	20	8,640	12,811	9,541	11,507	1,143	4/21%	8,992	9,069	0,129
Ulrich	Ge	Nissan	19	8,548	12,567	9,788	11,948	1,218	2/11%	9,479	10,931	0,834
21:31	B	Auto	Rd	Min	Max	Ø	95%¹	σ³	Anomalien²	bØ	b95%	bσ
Susi	Ge	Posche 962	22	8,228	10,413	8,711	10,410	0,824	0/0%	8,711	10,410	0,824
Ulrich	Or	Nissan	20	8,491	15,627	9,524	10,880	1,694	1/5%	9,184	10,831	0,860
Robin	Bl	Aston	16	9,113	17,069	11,733	13,685	1,968	10/67%	9,872	10,249	-
Dani	Ro	Mazda	18	8,623	26,847	10,526	11,893	4,352	4/24%	9,025	9,386	0,541
MikeH	Gr	Ferrari	20	8,670	11,574	9,454	11,362	1,001	4/21%	8,976	9,750	0,542
21:36	B	Auto	Rd	Min	Max	Ø	95%¹	σ³	Anomalien²	bØ	b95%	bσ
Ulrich	Gr	Nissan	20	8,399	13,041	9,382	11,610	1,370	3/16%	8,908	10,544	0,797
Susi	Or	Posche 962	22	8,256	12,662	8,943	10,622	1,139	1/5%	8,757	10,607	0,778
Pesto	Ro	Mazda	20	8,681	13,224	9,854	13,009	1,578	3/16%	9,263	10,846	0,807
Dani	Ge	Mazda	21	8,311	14,975	9,165	11,622	1,685	3/15%	8,549	8,587	0,466
MikeH	Bl	Ferrari	14	8,870	46,711	13,403	14,623	10,112	5/38%	9,443	10,928	-
21:45	B	Auto	Rd	Min	Max	Ø	95%¹	σ³	Anomalien²	bØ	b95%	bσ
Sergey	Ro	Enzo	21	8,131	10,185	8,334	8,600	0,438	0/0%	8,334	8,600	0,438
Wolfi	Gr	Mazda	21	7,893	10,113	8,261	10,070	0,660	0/0%	8,261	10,070	0,660
Rainer	Bl	Mazda	21	8,126	11,430	8,409	9,172	0,705	1/5%	8,258	8,379	0,068
Ruedi	Or	Mazda	21	8,013	10,893	8,368	10,046	0,720	0/0%	8,368	10,046	0,720
Tom	Ge	Mazda	22	7,858	10,085	8,114	8,470	0,456	0/0%	8,115	8,470	0,456
21:49	B	Auto	Rd	Min	Max	Ø	95%¹	σ³	Anomalien²	bØ	b95%	bσ
Wolfi	Bl	Mazda	22	8,196	10,307	8,393	8,571	0,447	0/0%	8,393	8,571	0,447

Sergey	Ge	Enzo	23	7,817	10,815	8,136	9,890	0,731	0/0%	8,136	9,890	0,731
Ruedi	Gr	Mazda	22	7,882	11,179	8,250	10,976	0,939	1/5%	8,103	7,998	0,676
Rainer	Ro	Mazda	22	8,266	10,509	8,504	9,720	0,551	0/0%	8,504	9,720	0,551
Tom	Or	Mazda	22	7,966	9,988	8,199	9,589	0,531	0/0%	8,199	9,589	0,531
21:53	B	Auto	Rd	Min	Max	Ø	95% ¹	σ ³	Anomalien ²	bØ	b95%	bσ
Ruedi	Bl	Mazda	22	8,125	10,307	8,291	8,338	0,464	0/0%	8,291	8,338	0,464
Wolfi	Ro	Mazda	21	8,366	10,985	8,861	10,827	0,867	0/0%	8,861	10,827	0,867
Tom	Gr	Mazda	22	7,974	8,582	8,052	8,078	0,125	0/0%	8,052	8,078	0,125
Sergey	Or	Enzo	23	7,819	8,002	7,885	7,978	0,041	0/0%	7,885	7,978	0,041
Rainer	Ge	Mazda	22	8,027	8,199	8,101	8,194	0,061	0/0%	8,101	8,194	0,061
21:57	B	Auto	Rd	Min	Max	Ø	95% ¹	σ ³	Anomalien ²	bØ	b95%	bσ
Tom	Bl	Mazda	22	8,196	8,549	8,309	8,499	0,090	0/0%	8,309	8,499	0,090
Ruedi	Ro	Mazda	21	8,338	9,929	8,541	9,899	0,471	0/0%	8,541	9,899	0,471
Rainer	Or	Mazda	22	8,022	8,448	8,140	8,272	0,098	0/0%	8,140	8,272	0,098
Sergey	Gr	Enzo	22	7,799	7,923	7,866	7,923	0,035	0/0%	7,866	7,923	0,035
Wolfi	Ge	Mazda	22	8,021	10,087	8,184	8,143	0,436	0/0%	8,184	8,143	0,436
22:00	B	Auto	Rd	Min	Max	Ø	95% ¹	σ ³	Anomalien ²	bØ	b95%	bσ
Sergey	Bl	Enzo	23	8,042	10,783	8,212	8,227	0,576	0/0%	8,212	8,227	0,576
Ruedi	Ge	Mazda	22	7,924	11,810	8,311	11,041	1,040	2/10%	7,984	8,044	0,033
Tom	Ro	Mazda	21	8,450	12,010	8,736	8,853	0,776	1/5%	8,564	8,723	0,106
Wolfi	Or	Mazda	22	8,061	10,657	8,236	8,189	0,555	0/0%	8,236	8,189	0,555
Rainer	Gr	Mazda	21	7,967	10,757	8,319	10,444	0,783	0/0%	8,319	10,444	0,783
22:19	B	Auto	Rd	Min	Max	Ø	95% ¹	σ ³	Anomalien ²	bØ	b95%	bσ
Susi	Ge	Posche 962	22	8,013	11,453	8,337	9,920	0,802	1/5%	8,188	8,559	0,403
Dani	Gr	Mazda	21	7,958	11,830	8,440	10,394	0,930	1/5%	8,271	8,536	0,524
Pesto	Or	Mazda	21	8,269	10,811	8,748	10,745	0,700	0/0%	8,748	10,745	0,700
Ulrich	Bl	Nissan	19	8,716	12,475	9,613	12,376	1,051	3/16%	9,132	10,224	0,523
Wolfgang	Ro	Mazda	20	8,293	13,339	9,036	12,573	1,034	2/10%	8,600	9,710	0,562
22:24	B	Auto	Rd	Min	Max	Ø	95% ¹	σ ³	Anomalien ²	bØ	b95%	bσ
Dani	Bl	Mazda	21	8,309	11,996	9,229	11,833	1,251	2/10%	8,931	10,634	0,910
Wolfgang	Ge	Mazda	21	8,012	12,465	9,111	12,315	1,565	4/20%	8,425	10,198	0,759
Pesto	Gr	Mazda	21	8,255	10,565	8,949	10,461	0,962	0/0%	8,949	10,461	0,962
Susi	Or	Posche 962	22	8,060	11,956	8,691	10,207	1,107	1/5%	8,528	10,192	0,841
MikeH	Ro	Ferrari	19	8,909	14,004	10,175	13,114	1,676	5/26%	9,251	9,832	0,489
22:30	B	Auto	Rd	Min	Max	Ø	95% ¹	σ ³	Anomalien ²	bØ	b95%	bσ
Wolfgang	Or	Mazda	22	8,065	11,556	8,502	10,478	0,927	1/5%	8,349	9,815	0,627
Pesto	Bl	Mazda	21	8,399	10,444	8,624	8,694	0,437	0/0%	8,624	8,694	0,437
Susi	Gr	Posche 962	22	8,105	10,306	8,265	8,209	0,467	0/0%	8,265	8,209	0,467
Ulrich	Ro	Nissan	19	8,928	11,335	9,639	10,980	0,792	1/6%	9,540	10,908	0,695
MikeH	Ge	Ferrari	19	8,512	11,937	9,156	11,043	0,999	2/11%	8,864	8,926	0,538
22:35	B	Auto	Rd	Min	Max	Ø	95% ¹	σ ³	Anomalien ²	bØ	b95%	bσ
Dani	Ro	Mazda	21	8,615	10,979	8,986	10,806	0,663	0/0%	8,986	10,806	0,663
MikeH	Or	Ferrari	20	8,507	16,555	9,734	12,056	2,010	4/21%	8,884	10,042	0,541
Susi	Bl	Posche 962	22	8,318	10,507	8,658	10,356	0,719	0/0%	8,658	10,356	0,719
Wolfgang	Gr	Mazda	21	8,103	11,402	8,956	10,519	1,062	1/5%	8,827	10,258	0,922

Ulrich	Ge	Nissan	20	8,469	10,731	9,168	10,715	0,886	0/0%	9,168	10,715	0,886
22:39	B	Auto	Rd	Min	Max	Ø	95%¹	σ³	Anomalien²	bØ	b95%	bσ
Pesto	Ro	Mazda	20	8,584	42,731	11,311	14,152	7,750	4/21%	8,919	9,212	0,348
Dani	Ge	Mazda	21	8,227	10,513	8,609	10,420	0,706	0/0%	8,609	10,420	0,706
Ulrich	Or	Nissan	20	8,509	13,211	9,594	11,290	1,316	3/16%	9,172	10,826	0,840
MikeH	Gr	Ferrari	19	8,569	12,974	9,279	12,697	1,388	2/11%	8,835	8,990	0,546
Wolfgang	Bl	Mazda	21	8,323	10,567	8,752	10,525	0,741	0/0%	8,752	10,525	0,741
22:45	B	Auto	Rd	Min	Max	Ø	95%¹	σ³	Anomalien²	bØ	b95%	bσ
MikeH	Bl	Ferrari	19	8,813	73,028	13,405	13,607	1,392	4/22%	9,378	10,899	0,824
Dani	Or	Mazda	22	8,259	70,553	11,701	10,743	0,773	1/5%	8,759	10,541	0,788
Pesto	Ge	Mazda	21	8,216	70,595	12,056	12,428	1,236	3/15%	8,626	10,314	0,740
Ulrich	Gr	Nissan	21	8,412	70,811	12,179	11,437	0,932	3/15%	8,843	10,171	0,627
Susi	Ro	Posche 962	21	8,462	10,668	8,860	10,540	0,732	0/0%	8,860	10,540	0,732
22:54	B	Auto	Rd	Min	Max	Ø	95%¹	σ³	Anomalien²	bØ	b95%	bσ
Ruedi	Gr	Mazda	22	7,864	10,123	8,054	8,235	0,468	0/0%	8,054	8,235	0,468
Sergey	Ro	Enzo	21	8,125	10,310	8,310	8,433	0,464	0/0%	8,310	8,433	0,464
Wolfi	Bl	Mazda	21	8,183	11,706	8,598	11,682	1,033	2/10%	8,272	8,439	0,070
Tom	Ge	Mazda	22	7,880	9,981	8,075	8,363	0,434	0/0%	8,075	8,363	0,434
Rainer	Or	Mazda	21	7,975	11,390	8,551	10,292	0,980	1/5%	8,409	10,126	0,751
22:58	B	Auto	Rd	Min	Max	Ø	95%¹	σ³	Anomalien²	bØ	b95%	bσ
Sergey	Ge	Enzo	23	7,855	7,974	7,901	7,950	0,032	0/0%	7,901	7,950	0,032
Ruedi	Bl	Mazda	22	8,039	8,371	8,116	8,203	0,068	0/0%	8,116	8,203	0,068
Tom	Or	Mazda	23	7,902	8,005	7,945	7,987	0,023	0/0%	7,945	7,987	0,023
Rainer	Gr	Mazda	22	7,986	10,480	8,176	8,147	0,528	0/0%	8,176	8,147	0,528
Wolfi	Ro	Mazda	20	8,430	11,971	8,861	11,193	0,969	2/11%	8,541	8,704	0,105
23:02	B	Auto	Rd	Min	Max	Ø	95%¹	σ³	Anomalien²	bØ	b95%	bσ
Ruedi	Ro	Mazda	21	8,254	10,435	8,575	9,995	0,574	0/0%	8,575	9,995	0,574
Sergey	Or	Enzo	23	7,762	9,800	7,899	7,867	0,425	0/0%	7,899	7,867	0,425
Wolfi	Ge	Mazda	22	8,050	10,560	8,318	10,207	0,688	0/0%	8,318	10,207	0,688
Rainer	Bl	Mazda	20	8,175	13,591	8,891	12,252	1,457	2/11%	8,417	8,546	0,304
Tom	Gr	Mazda	22	7,891	9,976	8,069	8,362	0,446	0/0%	8,069	8,362	0,446
23:06	B	Auto	Rd	Min	Max	Ø	95%¹	σ³	Anomalien²	bØ	b95%	bσ
Ruedi	Ge	Mazda	23	7,964	10,158	8,159	8,408	0,452	0/0%	8,159	8,408	0,452
Sergey	Gr	Enzo	23	7,795	9,700	7,924	8,031	0,399	0/0%	7,924	8,031	0,399
Rainer	Ro	Mazda	21	8,317	12,828	8,690	9,699	1,020	1/5%	8,472	8,809	0,317
Tom	Bl	Mazda	22	8,144	10,318	8,313	8,355	0,461	0/0%	8,313	8,355	0,461
Wolfi	Or	Mazda	22	8,084	11,855	8,314	8,419	0,813	1/5%	8,137	8,173	0,071
23:10	B	Auto	Rd	Min	Max	Ø	95%¹	σ³	Anomalien²	bØ	b95%	bσ
Rainer	Ge	Mazda	22	8,059	10,486	8,362	10,105	0,651	0/0%	8,362	10,105	0,651
Sergey	Bl	Enzo	23	7,985	9,907	8,138	8,171	0,397	0/0%	8,138	8,171	0,397
Tom	Ro	Mazda	21	8,276	10,622	8,676	9,999	0,570	0/0%	8,676	9,999	0,570
Wolfi	Gr	Mazda	22	8,023	10,179	8,206	8,216	0,454	0/0%	8,206	8,216	0,454
Ruedi	Or	Mazda	22	7,943	11,569	8,203	8,128	0,772	1/5%	8,035	8,108	0,047

Hinweise: ¹ In der Statistik bezeichnet man für eine Wahrscheinlichkeitsfunktion das p%-Quantil (oder auch p-tes Perzentil oder Fraktile) als jenen Wert des Ereignisraumes, dem ein Wert von p% der Verteilungsfunktion zugeordnet ist. Es sind dann p% der Beobachtungen oder der Grundgesamtheit kleiner als das p%-Quantil. - ² Rundenzeiten größer 18,000s werden als Anomalien gewertet - ³ Standardabweichung: Streuung der Rundenzeiten um ihren Mittelwert - **Allgemein:** die "b"-Werte

auf der rechten Seite der Tabelle sind sog. "bereinigte" Werte. Bei der Berechnung werden Anomalien herausgerechnet.
Forensic RaceReport created by MTAMike SCDReporter.NET Beta 0.9.4d Preview 7 Fork 3 'Heavy Snow Build' 16.12.2010 23:13:31