



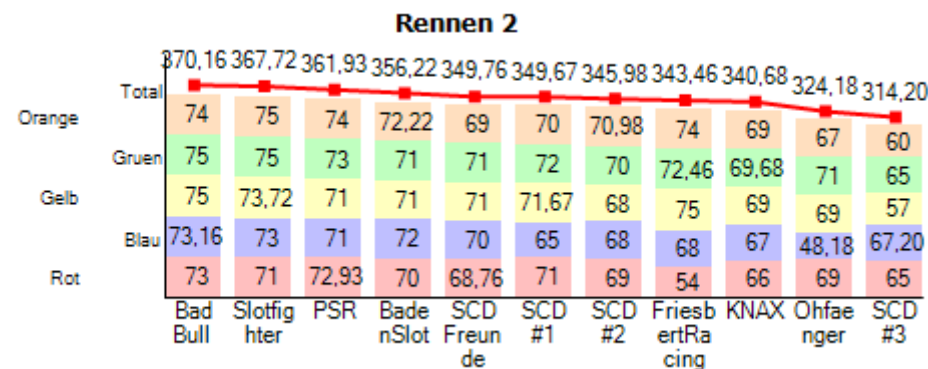
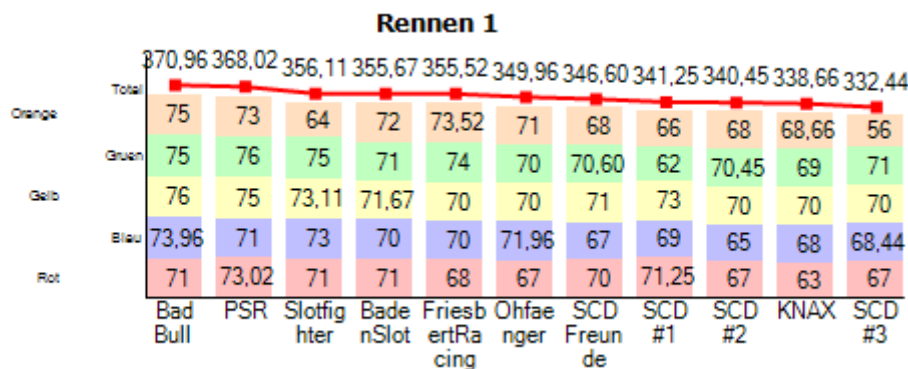
# SCD

**RaceReport vom 18.12.2010**  
**'SCD Weihnachtsrennen**  
**MINIZ auf Moosgummi'**  
 Bahn: SCD Holz (40,23m)

Quali									Gesamtergebnis								
Team	P	S	Rd	Min	ΔP1	ΔPN	Max	Ø	Team	P	S	Rd	ΔP1	ΔPN	Min	Max	Ø
Bad Bull	1	1	7,00	<b>7,718</b>			11,798	8,438	Bad Bull	1	10	<b>741,12</b>			7,780	17,157	8,204
PSR	2	1	5,00	<b>7,798</b>	+0,080	+0,080	7,857	7,832	PSR	2	10	<b>729,95</b>	-11,17	-11,17	7,856	14,053	8,335
Slotfighter	3	1	7,00	<b>7,802</b>	+0,084	+0,004	10,888	8,312	Slotfighter	3	10	<b>723,83</b>	-17,29	-6,12	7,656	104,718	8,417
FriesbertRacing	4	1	6,00	<b>7,863</b>	+0,145	+0,061	13,565	9,038	BadenSlot	4	10	<b>711,89</b>	-29,23	-11,94	7,948	14,702	8,625
SCD Freunde	5	1	6,00	<b>8,012</b>	+0,294	+0,149	10,433	8,872	FriesbertRacing	5	10	<b>698,98</b>	-42,14	-12,91	7,841	110,571	8,707
Ohfaenger	6	1	7,00	<b>8,024</b>	+0,306	+0,012	10,492	8,481	SCD Freunde	6	10	<b>696,36</b>	-44,76	-2,62	8,024	32,845	8,843
SCD #1	7	1	7,00	<b>8,055</b>	+0,337	+0,031	9,664	8,402	SCD #1	7	10	<b>690,92</b>	-50,20	-5,44	7,981	102,851	8,919
BadenSlot	8	1	6,00	<b>8,111</b>	+0,393	+0,056	10,976	9,054	SCD #2	8	10	<b>686,43</b>	-54,69	-4,49	8,257	30,475	8,983
KNAX	9	1	6,00	<b>8,272</b>	+0,554	+0,161	9,892	8,650	KNAX	9	10	<b>679,34</b>	-61,78	-7,09	8,232	20,852	9,109
SCD #2	10	1	6,00	<b>8,342</b>	+0,624	+0,070	9,789	8,679	Ohfaenger	10	10	<b>674,14</b>	-66,98	-5,20	7,996	181,622	9,201
SCD #3	11	1	6,00	<b>8,635</b>	+0,917	+0,293	11,225	9,178	SCD #3	11	10	<b>646,64</b>	-94,48	-27,50	8,209	104,426	9,569

Rennen 1									Rennen 2								
Team	P	S	Rd	ΔP1	ΔPN	Min	Max	Ø	Team	P	S	Rd	ΔP1	ΔPN	Min	Max	Ø
Bad Bull	1	5	<b>370,96</b>			7,780	14,573	8,293	Bad Bull	1	5	<b>370,16</b>			7,853	17,157	8,319
PSR	2	5	<b>368,02</b>	-2,94	-2,94	7,856	12,362	8,381	Slotfighter	2	5	<b>367,72</b>	-2,44	-2,44	7,702	12,060	8,361
Slotfighter	3	5	<b>356,11</b>	-14,85	-11,91	7,656	104,718	8,686	PSR	3	5	<b>361,93</b>	-8,23	-5,79	7,892	14,053	8,497
BadenSlot	4	5	<b>355,67</b>	-15,29	-0,44	7,948	14,702	8,821	BadenSlot	4	5	<b>356,22</b>	-13,94	-5,71	8,025	13,948	8,648
FriesbertRacing	5	5	<b>355,52</b>	-15,44	-0,15	7,896	15,776	8,663	SCD Freunde	5	5	<b>349,76</b>	-20,40	-6,46	8,024	14,629	8,988
Ohfaenger	6	5	<b>349,96</b>	-21,00	-5,56	8,164	15,579	8,982	SCD #1	6	5	<b>349,67</b>	-20,49	-0,09	7,981	50,258	8,878
SCD Freunde	7	5	<b>346,60</b>	-24,36	-3,36	8,130	32,845	8,939	SCD #2	7	5	<b>345,98</b>	-24,18	-3,69	8,257	14,471	9,060
SCD #1	8	5	<b>341,25</b>	-29,71	-5,35	8,029	102,851	9,197	FriesbertRacing	8	5	<b>343,46</b>	-26,70	-2,52	7,841	110,571	8,984
SCD #2	9	5	<b>340,45</b>	-30,51	-0,80	8,339	30,475	9,156	KNAX	9	5	<b>340,68</b>	-29,48	-2,78	8,300	15,723	9,246
KNAX	10	5	<b>338,66</b>	-32,30	-1,79	8,232	20,852	9,226	Ohfaenger	10	5	<b>324,18</b>	-45,98	-16,50	7,996	181,622	9,700
SCD #3	11	5	<b>332,44</b>	-38,52	-6,22	8,209	104,426	9,448	SCD #3	11	5	<b>314,20</b>	-55,96	-9,98	8,245	103,294	9,963

## Rundenübersicht



## Top 20 Statistiken

Schnellste Runde	Bereinigter	Bereinigte	Anomalien <sup>2</sup>	Ampestart	Chaussituationen
------------------	-------------	------------	------------------------	-----------	------------------

total				Durchschnitt				Standardabweichung <sup>3</sup>							Stintwechsel					
Min	Fahrer	Zeit	B	bØ	Fahrer	Zeit	B	bσ	Fahrer	Zeit	B	Anzahl	Fahrer	Min	Fahrer	Zeit	Chaos	Stint		
7,656	Sergey	14:30	Or	7,945	Sergey	14:29	Or	0,066	Thomas Z	15:22	Bl	0	Olaf	0,198	Michael	12:58	Anz.	162	Anz.	21
7,672	Sergey	14:30	Or	7,966	Thomas Z	15:10	Gr	0,144	Michael	17:29	Bl	0	Soenke	0,234	Sergey	14:29	Min	3s	Min	2,0m
7,683	Sergey	14:30	Or	8,058	Wolfi	17:29	Gr	0,219	Dani	15:10	Ge	5	Thomas Z	0,282	Pesto	15:46	Max	39s	Max	13,9m
7,702	Wolfi	17:17	Or	8,068	Sven	14:29	Ge	0,331	Frank	12:58	Bl	6	Wolfi	0,290	Frank	12:58	Ø	11s	Ø	4,7m
7,703	Sergey	14:30	Or	8,071	Thomas Z	17:29	Ge	0,344	Ruedi	14:29	Ro	6	Sergey	0,291	Dani	17:15	-	-	-	-
7,710	Sergey	14:30	Or	8,084	Sven	14:56	Gr	0,344	AndreasK	17:42	Gr	7	Sven	0,302	Sven	14:29	-	-	-	-
7,727	Wolfi	17:16	Or	8,086	Marco	17:42	Ge	0,353	Thomas Z	15:10	Gr	7	AndreasK	0,315	Jochen	15:46	-	-	-	-
7,728	Sergey	14:30	Or	8,118	Ruedi	17:42	Or	0,379	Marco	17:42	Ge	7	Wolfgang	0,319	Findus	12:58	-	-	-	-
7,746	Wolfi	17:19	Or	8,142	Wolfi	17:15	Or	0,381	Ruedi	17:42	Or	9	Marco	0,340	Frank	15:46	-	-	-	-
7,750	Wolfi	17:17	Or	8,167	Thomas Z	15:22	Bl	0,392	AndreasK	15:10	Bl	9	Ruedi	0,387	Thatsme	14:30	-	-	-	-
7,751	Sergey	14:33	Or	8,168	Thomas Z	17:54	Gr	0,396	Wolfgang	17:42	Ro	11	Findus	0,400	Michael	17:15	-	-	-	-
7,753	Wolfi	17:19	Or	8,169	Wolfi	14:42	Gr	0,399	Thomas Z	17:29	Ge	15	Frank	0,419	Berthold	12:58	-	-	-	-
7,753	Wolfi	17:16	Or	8,177	Marco	17:54	Or	0,400	Wolfi	17:29	Gr	19	Pesto	0,441	Berthold	15:46	-	-	-	-
7,756	Sergey	14:30	Or	8,184	Ruedi	14:56	Or	0,410	Wolfgang	18:06	Or	21	Thatsme	0,512	Wolfi	17:15	-	-	-	-
7,762	Sergey	14:31	Or	8,188	Thomas Z	14:42	Ge	0,413	Sven	14:29	Ge	22	Dani	0,513	Toni	15:46	-	-	-	-
7,764	Wolfi	17:16	Or	8,215	Sven	17:29	Or	0,417	Dani	17:29	Ro	22	Toni	0,517	Marco	14:29	-	-	-	-
7,764	Sergey	14:34	Or	8,221	Marco	14:29	Gr	0,420	Marco	15:22	Or	22	Berthold	0,525	Toni	12:58	-	-	-	-
7,766	Sergey	14:34	Or	8,225	Ruedi	18:06	Bl	0,423	Sergey	15:22	Ge	24	Thorsten	0,809	Ruedi	17:15	-	-	-	-
7,773	Sergey	14:34	Or	8,244	Ruedi	14:29	Ro	0,429	Jochen	16:58	Ge	24	Mike	4,812	Ruedi	14:30	-	-	-	-
7,776	Sergey	14:33	Or	8,246	AndreasK	17:42	Gr	0,446	Uwe	16:01	Ge	25	Jochen	5,211	AndreasK	17:15	-	-	-	-

### Top 10 Schnellste Runde pro Spur

Rot			Blau			Gelb			Gruen			Orange		
Min	Fahrer	Zeit	Min	Fahrer	Zeit	Min	Fahrer	Zeit	Min	Fahrer	Zeit	Min	Fahrer	Zeit
8,016	Ruedi	14:30	7,982	Ruedi	18:14	7,803	Thomas Z	14:49	7,780	Thomas Z	15:10	7,656	Sergey	14:30
8,016	Ruedi	14:31	7,983	Ruedi	18:14	7,808	Thomas Z	14:47	7,815	Thomas Z	15:10	7,672	Sergey	14:30
8,030	Ruedi	17:22	8,021	Ruedi	18:12	7,815	Thomas Z	14:51	7,841	Thomas Z	15:12	7,683	Sergey	14:30
8,034	Ruedi	17:15	8,022	Ruedi	18:08	7,832	Thomas Z	14:51	7,842	Thomas Z	15:16	7,702	Wolfi	17:17
8,054	Ruedi	14:30	8,023	Thomas Z	15:27	7,833	Thomas Z	14:54	7,842	Thomas Z	15:14	7,703	Sergey	14:30
8,071	Ruedi	14:31	8,026	Thomas Z	15:23	7,842	Thomas Z	14:52	7,843	Thomas Z	15:13	7,710	Sergey	14:30
8,072	Ruedi	17:23	8,034	Sergey	14:58	7,842	Thomas Z	14:53	7,845	Thomas Z	15:10	7,727	Wolfi	17:16
8,072	Ruedi	14:33	8,034	Ruedi	18:17	7,842	Thomas Z	14:48	7,846	Thomas Z	15:16	7,728	Sergey	14:30
8,080	Ruedi	17:23	8,037	Ruedi	18:14	7,843	Thomas Z	14:47	7,849	Thomas Z	15:12	7,746	Wolfi	17:19
8,081	Ruedi	14:33	8,039	Sergey	14:58	7,843	Thomas Z	14:53	7,849	Thomas Z	15:17	7,750	Wolfi	17:17

### Stints

12:58	B	Fahrer	Rd	Min	Max	Ø	95% <sup>1</sup>	σ <sup>3</sup>	Anomalien <sup>2</sup>	bØ	b95%	bσ
BadenSlot	Or	Michael	72	7,948	12,215	8,446	10,307	0,776	2/3%	8,340	8,564	0,447
KNAX	Gr	Berthold	69	8,335	12,643	8,835	11,033	0,803	4/6%	8,664	10,072	0,487
SCD #2	Bl	Frank	65	8,447	30,475	9,365	11,740	2,840	7/11%	8,743	8,885	0,331
Ohfaenger	Ro	Toni	67	8,365	15,579	9,093	11,037	1,271	4/6%	8,826	10,244	0,610
SCD #1	Ge	Findus	73	8,029	12,188	8,385	10,427	0,619	2/3%	8,292	8,301	0,524
13:12	B	Fahrer	Rd	Min	Max	Ø	95% <sup>1</sup>	σ <sup>3</sup>	Anomalien <sup>2</sup>	bØ	b95%	bσ

<b>BadenSlot</b>	Gr	Michael	71	8,008	12,727	8,912	10,847	1,157	4/6%	8,721	10,641	0,870
<b>Ohfaenger</b>	Ge	Uwe	70	8,206	13,069	9,016	11,203	1,063	6/9%	8,763	10,685	0,736
<b>KNAX</b>	Bl	Olaf	68	8,421	14,891	9,324	12,169	1,255	8/12%	8,913	10,829	0,640
<b>SCD #1</b>	Or	Jochen	66	8,257	26,244	9,525	11,776	2,771	8/12%	8,822	10,548	0,728
<b>SCD #3</b>	Ro	Soenke	67	8,621	14,158	9,397	11,454	1,094	9/13%	9,005	9,350	0,471
<b>13:28</b>	<b>B</b>	<b>Fahrer</b>	<b>Rd</b>	<b>Min</b>	<b>Max</b>	<b>Ø</b>	<b>95%<sup>1</sup></b>	<b>σ<sup>3</sup></b>	<b>Anomalien<sup>2</sup></b>	<b>bØ</b>	<b>b95%</b>	<b>bσ</b>
<b>Ohfaenger</b>	Or	Toni	71	8,164	12,828	8,963	10,769	1,081	4/6%	8,794	10,599	0,839
<b>BadenSlot</b>	Bl	Michael	70	8,168	14,702	9,139	11,594	1,326	5/7%	8,873	10,685	0,887
<b>SCD #2</b>	Ro	Mike	67	8,552	13,171	9,409	12,364	1,090	7/11%	9,092	10,678	0,685
<b>SCD #1</b>	Gr	Findus	62	8,081	102,851	10,260	10,448	12,103	3/5%	8,575	10,371	0,763
<b>SCD #3</b>	Ge	Thorsten	70	8,334	13,042	9,066	11,089	1,089	4/6%	8,877	10,781	0,778
<b>13:43</b>	<b>B</b>	<b>Fahrer</b>	<b>Rd</b>	<b>Min</b>	<b>Max</b>	<b>Ø</b>	<b>95%<sup>1</sup></b>	<b>σ<sup>3</sup></b>	<b>Anomalien<sup>2</sup></b>	<b>bØ</b>	<b>b95%</b>	<b>bσ</b>
<b>SCD #2</b>	Ge	Frank	70	8,393	13,492	8,803	10,767	0,844	1/1%	8,735	10,616	0,625
<b>Ohfaenger</b>	Gr	Uwe	70	8,204	12,410	8,841	10,988	0,943	3/4%	8,706	10,597	0,703
<b>SCD #1</b>	Bl	Jochen	69	8,380	12,992	8,965	11,289	0,983	5/7%	8,747	10,535	0,589
<b>SCD #3</b>	Or	Soenke	56	8,506	104,426	11,016	12,230	12,871	7/13%	8,971	10,835	0,614
<b>KNAX</b>	Ro	Olaf	63	8,608	20,852	9,798	12,456	2,001	10/16%	9,107	10,526	0,553
<b>13:57</b>	<b>B</b>	<b>Fahrer</b>	<b>Rd</b>	<b>Min</b>	<b>Max</b>	<b>Ø</b>	<b>95%<sup>1</sup></b>	<b>σ<sup>3</sup></b>	<b>Anomalien<sup>2</sup></b>	<b>bØ</b>	<b>b95%</b>	<b>bσ</b>
<b>SCD #2</b>	Or	Mike	68	8,339	20,752	9,280	11,763	2,053	7/10%	8,746	10,379	0,629
<b>SCD #3</b>	Gr	Thorsten	71	8,209	11,015	8,711	10,687	0,814	1/1%	8,677	10,687	0,770
<b>Ohfaenger</b>	Bl	Toni	71	8,165	11,608	8,690	10,554	0,839	2/3%	8,610	10,500	0,705
<b>KNAX</b>	Ge	Olaf	70	8,232	12,512	8,882	10,812	0,964	3/4%	8,746	10,515	0,730
<b>BadenSlot</b>	Ro	Wolfgang	71	8,287	11,439	8,751	10,556	0,809	1/1%	8,712	10,556	0,746
<b>14:11</b>	<b>B</b>	<b>Fahrer</b>	<b>Rd</b>	<b>Min</b>	<b>Max</b>	<b>Ø</b>	<b>95%<sup>1</sup></b>	<b>σ<sup>3</sup></b>	<b>Anomalien<sup>2</sup></b>	<b>bØ</b>	<b>b95%</b>	<b>bσ</b>
<b>SCD #3</b>	Bl	Soenke	68	8,560	11,411	9,031	11,033	0,682	4/6%	8,888	9,281	0,481
<b>KNAX</b>	Or	Berthold	68	8,385	12,671	8,928	11,295	0,841	4/6%	8,737	10,006	0,524
<b>BadenSlot</b>	Ge	Michael	71	7,986	12,066	8,540	10,624	0,887	2/3%	8,439	10,242	0,667
<b>SCD #2</b>	Gr	Frank	70	8,339	10,858	8,665	10,567	0,566	0/0%	8,665	10,567	0,566
<b>SCD #1</b>	Ro	Findus	71	8,241	11,651	8,566	10,272	0,510	1/1%	8,522	10,272	0,513
<b>14:29</b>	<b>B</b>	<b>Fahrer</b>	<b>Rd</b>	<b>Min</b>	<b>Max</b>	<b>Ø</b>	<b>95%<sup>1</sup></b>	<b>σ<sup>3</sup></b>	<b>Anomalien<sup>2</sup></b>	<b>bØ</b>	<b>b95%</b>	<b>bσ</b>
<b>PSR</b>	Ge	Sven	75	7,889	11,002	8,107	8,238	0,533	1/1%	8,068	8,136	0,413
<b>Slotfighter</b>	Or	Sergey	64	7,656	104,718	9,508	9,896	12,104	2/3%	7,945	8,012	0,458
<b>FriesbertRacing</b>	Gr	Marco	74	7,896	10,550	8,221	10,155	0,651	0/0%	8,221	10,155	0,651
<b>SCD Freunde</b>	Bl	Thatsme	67	8,317	12,857	8,933	10,856	0,942	3/4%	8,792	10,627	0,671
<b>Bad Bull</b>	Ro	Ruedi	71	8,016	14,573	8,378	10,044	0,552	2/3%	8,244	8,353	0,344
<b>14:42</b>	<b>B</b>	<b>Fahrer</b>	<b>Rd</b>	<b>Min</b>	<b>Max</b>	<b>Ø</b>	<b>95%<sup>1</sup></b>	<b>σ<sup>3</sup></b>	<b>Anomalien<sup>2</sup></b>	<b>bØ</b>	<b>b95%</b>	<b>bσ</b>
<b>Bad Bull</b>	Ge	Thomas Z	76	7,803	12,232	8,242	10,097	0,890	1/1%	8,188	10,092	0,761
<b>SCD Freunde</b>	Ro	Pesto	70	8,353	32,845	9,307	12,223	1,105	6/9%	8,700	10,407	0,609
<b>Slotfighter</b>	Gr	Wolfi	75	7,856	13,361	8,278	10,202	0,971	2/3%	8,169	10,039	0,699
<b>PSR</b>	Or	Sven	73	7,976	12,362	8,494	10,260	0,888	3/4%	8,361	10,247	0,613
<b>FriesbertRacing</b>	Bl	Dani	70	8,155	14,242	8,817	11,799	1,241	4/6%	8,562	10,483	0,664
<b>14:56</b>	<b>B</b>	<b>Fahrer</b>	<b>Rd</b>	<b>Min</b>	<b>Max</b>	<b>Ø</b>	<b>95%<sup>1</sup></b>	<b>σ<sup>3</sup></b>	<b>Anomalien<sup>2</sup></b>	<b>bØ</b>	<b>b95%</b>	<b>bσ</b>
<b>FriesbertRacing</b>	Ro	Marco	68	8,269	13,635	9,080	12,193	1,166	6/9%	8,762	9,835	0,541
<b>Bad Bull</b>	Or	Ruedi	75	7,847	11,398	8,305	10,317	0,819	3/4%	8,184	10,086	0,574
<b>PSR</b>	Gr	Sven	76	7,856	11,547	8,170	9,835	0,723	2/3%	8,084	9,680	0,499

SCD Freunde	Ge	Thatsme	71	8,180	12,225	8,716	11,052	0,939	5/7%	8,496	9,802	0,503
Slotfighter	Bl	Sergey	73	8,034	14,559	8,486	10,165	1,094	2/3%	8,332	10,034	0,589
<b>15:10</b>	<b>B</b>	<b>Fahrer</b>	<b>Rd</b>	<b>Min</b>	<b>Max</b>	<b>Ø</b>	<b>95%<sup>1</sup></b>	<b>σ<sup>3</sup></b>	<b>Anomalien<sup>2</sup></b>	<b>bØ</b>	<b>b95%</b>	<b>bσ</b>
FriesbertRacing	Ge	Dani	70	8,325	15,776	8,654	8,794	1,013	2/3%	8,491	8,766	<b>0,219</b>
SCD Freunde	Or	Pesto	68	8,190	14,049	8,850	10,772	0,971	2/3%	8,727	10,142	0,642
Slotfighter	Ro	Wolfi	71	8,255	11,408	8,550	9,966	0,600	1/1%	8,509	9,966	0,494
Bad Bull	Gr	Thomas Z	<b>75</b>	<b>7,780</b>	11,016	<b>8,007</b>	<b>8,037</b>	<b>0,498</b>	1/1%	<b>7,966</b>	<b>8,032</b>	0,353
PSR	Bl	AndreasK	71	8,182	11,438	8,428	8,480	0,534	1/1%	8,384	8,480	0,392
<b>15:22</b>	<b>B</b>	<b>Fahrer</b>	<b>Rd</b>	<b>Min</b>	<b>Max</b>	<b>Ø</b>	<b>95%<sup>1</sup></b>	<b>σ<sup>3</sup></b>	<b>Anomalien<sup>2</sup></b>	<b>bØ</b>	<b>b95%</b>	<b>bσ</b>
SCD Freunde	Gr	Thatsme	70	8,130	11,392	8,703	10,580	0,714	3/4%	8,590	10,380	0,587
PSR	Ro	Sven	<b>73</b>	8,202	10,358	8,425	9,714	0,485	0/0%	8,425	9,714	0,485
FriesbertRacing	Or	Marco	<b>73</b>	8,053	11,395	8,347	8,486	0,655	2/3%	8,262	8,308	0,420
Bad Bull	Bl	Thomas Z	<b>73</b>	<b>8,023</b>	12,528	<b>8,279</b>	<b>8,319</b>	0,679	2/3%	<b>8,167</b>	<b>8,255</b>	<b>0,066</b>
Slotfighter	Ge	Sergey	<b>73</b>	8,082	10,406	8,317	9,447	<b>0,423</b>	0/0%	8,317	9,447	0,423
<b>15:46</b>	<b>B</b>	<b>Fahrer</b>	<b>Rd</b>	<b>Min</b>	<b>Max</b>	<b>Ø</b>	<b>95%<sup>1</sup></b>	<b>σ<sup>3</sup></b>	<b>Anomalien<sup>2</sup></b>	<b>bØ</b>	<b>b95%</b>	<b>bσ</b>
SCD #1	Or	Jochen	70	8,108	14,653	8,869	11,468	1,285	6/9%	8,551	10,358	0,692
SCD #2	Gr	Frank	70	8,257	13,497	8,839	10,773	<b>0,985</b>	3/4%	8,695	10,723	0,692
SCD Freunde	Ge	Pesto	<b>71</b>	<b>8,075</b>	13,226	<b>8,767</b>	11,500	1,149	6/8%	<b>8,468</b>	<b>10,323</b>	<b>0,565</b>
Ohfaenger	Ro	Toni	69	8,266	17,205	8,961	<b>10,769</b>	1,310	2/3%	8,795	10,654	0,764
KNAX	Bl	Berthold	67	8,435	15,723	9,252	11,391	1,194	7/10%	8,928	10,807	0,614
<b>16:01</b>	<b>B</b>	<b>Fahrer</b>	<b>Rd</b>	<b>Min</b>	<b>Max</b>	<b>Ø</b>	<b>95%<sup>1</sup></b>	<b>σ<sup>3</sup></b>	<b>Anomalien<sup>2</sup></b>	<b>bØ</b>	<b>b95%</b>	<b>bσ</b>
Ohfaenger	Ge	Uwe	69	8,293	13,128	8,911	11,250	1,003	5/7%	8,665	9,080	<b>0,446</b>
SCD #2	Bl	Frank	68	8,519	14,471	9,090	11,297	1,073	4/6%	8,881	10,716	0,617
SCD #1	Gr	Findus	<b>72</b>	<b>7,981</b>	12,461	<b>8,503</b>	10,954	<b>0,937</b>	4/6%	<b>8,306</b>	<b>8,505</b>	0,470
SCD Freunde	Or	Thatsme	69	8,148	14,629	8,889	<b>10,506</b>	1,103	2/3%	8,749	10,314	0,731
SCD #3	Ro	Thorsten	65	8,452	14,953	9,353	12,442	1,427	8/12%	8,881	10,546	0,553
<b>16:14</b>	<b>B</b>	<b>Fahrer</b>	<b>Rd</b>	<b>Min</b>	<b>Max</b>	<b>Ø</b>	<b>95%<sup>1</sup></b>	<b>σ<sup>3</sup></b>	<b>Anomalien<sup>2</sup></b>	<b>bØ</b>	<b>b95%</b>	<b>bσ</b>
SCD #3	Ge	Soenke	57	8,495	103,294	10,929	11,790	12,619	8/14%	8,859	10,436	<b>0,502</b>
Ohfaenger	Or	Uwe	67	8,259	13,649	9,326	12,007	1,265	8/12%	8,937	<b>10,347</b>	0,692
SCD Freunde	Gr	Pesto	<b>71</b>	<b>8,024</b>	12,520	<b>8,730</b>	<b>10,475</b>	1,023	3/4%	<b>8,590</b>	10,386	0,788
KNAX	Ro	Olaf	66	8,535	13,912	9,495	12,779	1,271	8/12%	9,097	10,696	0,649
SCD #1	Bl	Jochen	65	8,260	50,258	9,543	10,926	<b>0,929</b>	3/5%	8,813	10,602	0,819
<b>16:29</b>	<b>B</b>	<b>Fahrer</b>	<b>Rd</b>	<b>Min</b>	<b>Max</b>	<b>Ø</b>	<b>95%<sup>1</sup></b>	<b>σ<sup>3</sup></b>	<b>Anomalien<sup>2</sup></b>	<b>bØ</b>	<b>b95%</b>	<b>bσ</b>
SCD #3	Or	Thorsten	60	8,245	62,097	10,770	12,538	9,447	6/10%	8,766	10,477	0,799
SCD Freunde	Bl	Thatsme	70	8,237	13,465	9,295	12,358	1,338	8/12%	8,921	10,714	0,861
Ohfaenger	Gr	Toni	<b>71</b>	<b>7,996</b>	15,060	<b>9,093</b>	11,837	1,620	10/14%	<b>8,544</b>	<b>10,462</b>	<b>0,780</b>
SCD #2	Ro	Mike	69	8,491	12,968	9,360	<b>11,115</b>	<b>1,165</b>	5/7%	9,143	10,796	0,875
KNAX	Ge	Berthold	69	8,329	13,279	9,327	11,771	1,276	7/10%	9,010	10,704	0,866
<b>16:44</b>	<b>B</b>	<b>Fahrer</b>	<b>Rd</b>	<b>Min</b>	<b>Max</b>	<b>Ø</b>	<b>95%<sup>1</sup></b>	<b>σ<sup>3</sup></b>	<b>Anomalien<sup>2</sup></b>	<b>bØ</b>	<b>b95%</b>	<b>bσ</b>
SCD #1	Ro	Findus	<b>71</b>	<b>8,198</b>	11,292	<b>8,700</b>	<b>10,468</b>	<b>0,758</b>	1/1%	<b>8,662</b>	10,468	0,695
SCD #3	Gr	Soenke	65	8,428	48,836	9,570	11,126	5,042	4/6%	8,818	<b>9,268</b>	0,486
Ohfaenger	Bl	Uwe	48	8,421	181,622	12,933	12,608	25,163	6/13%	8,889	9,281	<b>0,475</b>
KNAX	Or	Olaf	69	8,307	12,933	8,944	11,759	1,059	5/7%	8,691	10,219	0,552
SCD #2	Ge	Mike	68	8,395	13,262	8,969	10,994	1,039	3/4%	8,795	10,689	0,655
<b>16:58</b>	<b>B</b>	<b>Fahrer</b>	<b>Rd</b>	<b>Min</b>	<b>Max</b>	<b>Ø</b>	<b>95%<sup>1</sup></b>	<b>σ<sup>3</sup></b>	<b>Anomalien<sup>2</sup></b>	<b>bØ</b>	<b>b95%</b>	<b>bσ</b>

<b>SCD #1</b>	Ge	Jochen	<b>71</b>	<b>8,176</b>	11,882	<b>8,600</b>	<b>10,498</b>	0,766	3/4%	<b>8,465</b>	<b>8,631</b>	<b>0,429</b>
<b>SCD #2</b>	Or	Mike	70	8,309	13,171	8,684	10,631	0,890	2/3%	8,558	10,088	0,507
<b>SCD Freunde</b>	Ro	Pesto	68	8,310	12,255	8,922	10,741	0,856	2/3%	8,822	10,487	0,648
<b>SCD #3</b>	Bl	Thorsten	67	8,439	13,296	9,115	11,505	1,136	5/8%	8,866	10,705	0,707
<b>KNAX</b>	Gr	Berthold	69	8,300	10,821	8,776	10,693	<b>0,666</b>	0/0%	8,776	10,693	0,666
<b>17:15</b>	<b>B</b>	<b>Fahrer</b>	<b>Rd</b>	<b>Min</b>	<b>Max</b>	<b>Ø</b>	<b>95%<sup>1</sup></b>	<b>σ<sup>3</sup></b>	<b>Anomalien<sup>2</sup></b>	<b>bØ</b>	<b>b95%</b>	<b>bσ</b>
<b>Bad Bull</b>	Ro	Ruedi	73	8,030	12,312	8,531	10,223	<b>0,884</b>	2/3%	8,436	10,137	0,683
<b>FriesbertRacing</b>	Bl	Dani	68	8,303	12,212	9,186	11,907	1,123	8/12%	8,847	10,610	<b>0,648</b>
<b>BadenSlot</b>	Gr	Michael	71	8,025	11,991	8,706	11,243	1,074	6/8%	8,456	10,414	0,710
<b>Slotfighter</b>	Or	Wolfi	<b>75</b>	<b>7,702</b>	11,648	<b>8,279</b>	<b>10,122</b>	0,949	3/4%	<b>8,142</b>	<b>9,913</b>	0,678
<b>PSR</b>	Ge	AndreasK	71	7,892	14,053	8,635	10,569	0,897	4/6%	8,438	10,278	0,679
<b>17:29</b>	<b>B</b>	<b>Fahrer</b>	<b>Rd</b>	<b>Min</b>	<b>Max</b>	<b>Ø</b>	<b>95%<sup>1</sup></b>	<b>σ<sup>3</sup></b>	<b>Anomalien<sup>2</sup></b>	<b>bØ</b>	<b>b95%</b>	<b>bσ</b>
<b>PSR</b>	Or	Sven	74	7,955	11,390	8,259	10,041	0,651	1/1%	8,215	9,896	0,536
<b>BadenSlot</b>	Bl	Michael	72	8,170	13,342	8,520	8,827	0,858	3/4%	8,346	8,713	<b>0,144</b>
<b>Slotfighter</b>	Gr	Wolfi	<b>75</b>	7,890	10,080	<b>8,058</b>	<b>8,079</b>	0,400	0/0%	<b>8,058</b>	<b>8,079</b>	0,400
<b>Bad Bull</b>	Ge	Thomas Z	<b>75</b>	<b>7,853</b>	10,285	8,071	8,110	<b>0,399</b>	0/0%	8,071	8,110	0,399
<b>FriesbertRacing</b>	Ro	Dani	54	8,320	110,571	11,210	11,152	13,954	5/9%	9,033	9,613	0,417
<b>17:42</b>	<b>B</b>	<b>Fahrer</b>	<b>Rd</b>	<b>Min</b>	<b>Max</b>	<b>Ø</b>	<b>95%<sup>1</sup></b>	<b>σ<sup>3</sup></b>	<b>Anomalien<sup>2</sup></b>	<b>bØ</b>	<b>b95%</b>	<b>bσ</b>
<b>Slotfighter</b>	Bl	Wolfi	73	8,101	10,711	8,302	8,447	0,448	0/0%	8,302	8,447	0,448
<b>FriesbertRacing</b>	Ge	Marco	<b>75</b>	<b>7,949</b>	10,514	<b>8,086</b>	8,150	<b>0,379</b>	0/0%	<b>8,086</b>	8,150	0,379
<b>Bad Bull</b>	Or	Ruedi	74	7,965	10,533	8,118	<b>8,136</b>	0,381	0/0%	8,118	<b>8,136</b>	0,381
<b>PSR</b>	Gr	AndreasK	73	8,101	11,707	8,294	8,309	0,532	1/1%	8,246	8,294	<b>0,344</b>
<b>BadenSlot</b>	Ro	Wolfgang	70	8,261	13,948	8,579	10,424	0,830	2/3%	8,460	8,948	0,396
<b>17:54</b>	<b>B</b>	<b>Fahrer</b>	<b>Rd</b>	<b>Min</b>	<b>Max</b>	<b>Ø</b>	<b>95%<sup>1</sup></b>	<b>σ<sup>3</sup></b>	<b>Anomalien<sup>2</sup></b>	<b>bØ</b>	<b>b95%</b>	<b>bσ</b>
<b>Bad Bull</b>	Gr	Thomas Z	<b>75</b>	7,925	11,598	<b>8,215</b>	<b>8,499</b>	0,610	1/1%	<b>8,168</b>	<b>8,406</b>	0,466
<b>Slotfighter</b>	Ro	Sergey	71	8,281	12,060	8,642	10,355	0,704	2/3%	8,551	10,341	<b>0,459</b>
<b>BadenSlot</b>	Ge	Michael	71	8,053	11,888	8,630	11,195	1,007	6/9%	8,370	10,077	0,548
<b>PSR</b>	Bl	AndreasK	71	8,179	11,152	8,544	10,348	<b>0,562</b>	1/1%	8,506	10,348	0,566
<b>FriesbertRacing</b>	Or	Marco	74	<b>7,841</b>	11,453	8,222	10,077	0,775	1/1%	8,177	10,025	0,679
<b>18:06</b>	<b>B</b>	<b>Fahrer</b>	<b>Rd</b>	<b>Min</b>	<b>Max</b>	<b>Ø</b>	<b>95%<sup>1</sup></b>	<b>σ<sup>3</sup></b>	<b>Anomalien<sup>2</sup></b>	<b>bØ</b>	<b>b95%</b>	<b>bσ</b>
<b>PSR</b>	Ro	Sven	72	8,218	10,559	8,477	10,201	<b>0,563</b>	0/0%	8,477	10,201	0,563
<b>FriesbertRacing</b>	Gr	Dani	72	<b>7,941</b>	12,113	8,515	10,777	0,983	3/4%	8,375	10,183	0,732
<b>BadenSlot</b>	Or	Wolfgang	72	8,061	11,676	8,524	10,422	0,852	4/6%	8,341	8,710	<b>0,410</b>
<b>Slotfighter</b>	Ge	Wolfi	<b>73</b>	8,032	10,750	<b>8,343</b>	10,099	0,632	0/0%	8,343	10,099	0,632
<b>Bad Bull</b>	Bl	Ruedi	<b>73</b>	7,982	17,157	8,394	<b>10,072</b>	1,217	2/3%	<b>8,225</b>	<b>8,360</b>	0,498

**Hinweise:** <sup>1</sup> In der Statistik bezeichnet man für eine Wahrscheinlichkeitsfunktion das p%-Quantil (oder auch p-tes Perzentil oder Fraktile) als jenen Wert des Ereignisraumes, dem ein Wert von p% der Verteilungsfunktion zugeordnet ist. Es sind dann p% der Beobachtungen oder der Grundgesamtheit kleiner als das p%-Quantil. - <sup>2</sup> Rundenzeiten größer 11,000s werden als Anomalien gewertet. - <sup>3</sup> Standardabweichung: Streuung der Rundenzeiten um ihren Mittelwert - **Allgemein:** die "b"-Werte auf der rechten Seite der Tabelle sind sog. "bereinigte" Werte. Bei der Berechnung werden Anomalien herausgerechnet.