



SCD

RaceReport vom 24.10.2015

'SCD 12hours'

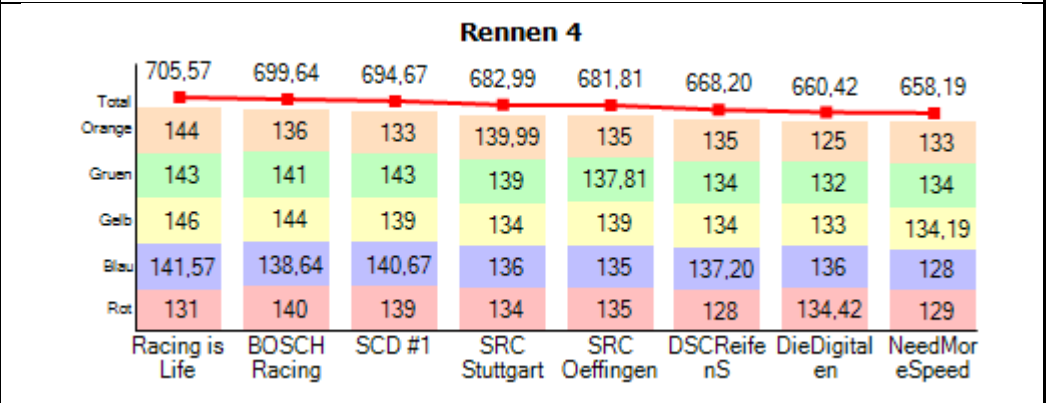
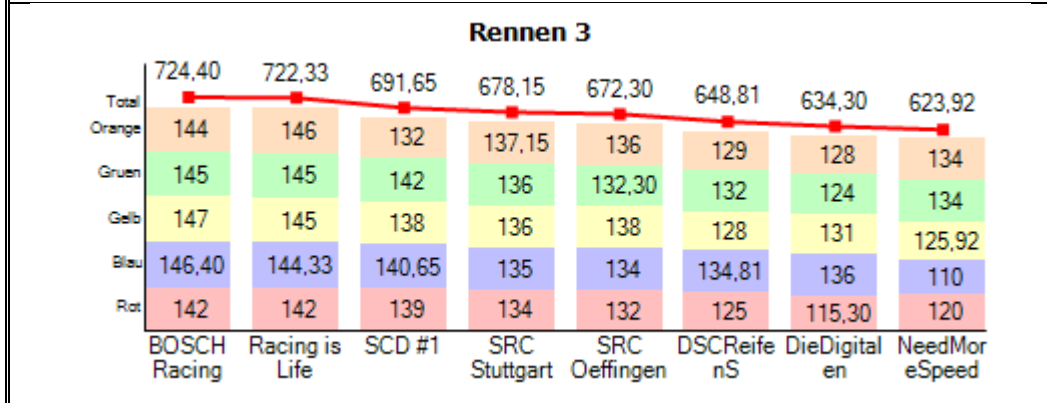
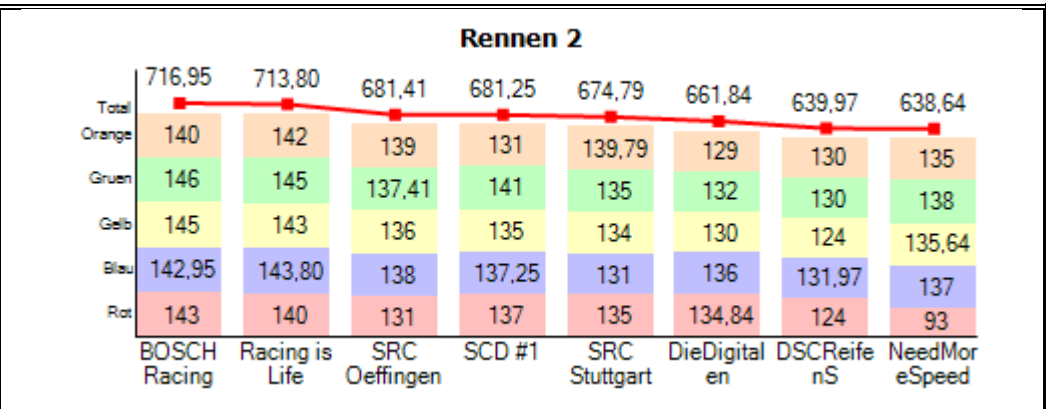
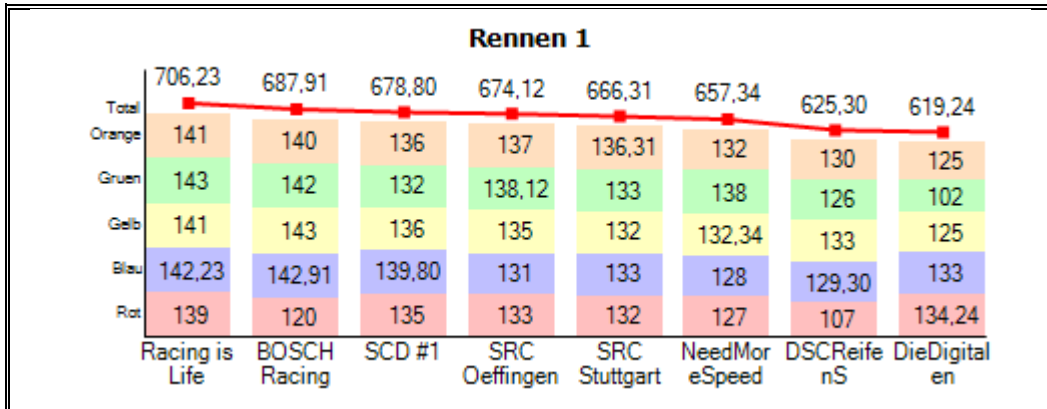
Bahn: SCD Holz (40,724m)

Quali									Gesamtergebnis								
Team	P	S	Rd	Min	ΔP1	ΔPN	Max	Ø	Team	P	S	Rd	ΔP1	ΔPN	Min	Max	Ø
Racing is Life	1	1	7,00	7,764			7,918	7,824	Racing is Life	1	20	2847,93			7,676	93,158	7,978
BOSCH Racing	2	1	6,00	7,821	+0,057	+0,057	14,610	9,021	BOSCH Racing	2	20	2828,90	-19,03	-19,03	7,640	142,670	8,036
SCD #1	3	1	7,00	7,900	+0,136	+0,079	10,338	8,371	SCD #1	3	20	2746,37	-101,56	-82,53	7,810	14,321	8,258
SRC Oeffingen	4	1	7,00	7,914	+0,150	+0,014	10,772	8,398	SRC Oeffingen	4	20	2709,64	-138,29	-36,73	7,817	22,188	8,387
SRC Stuttgart	5	1	6,00	7,991	+0,227	+0,077	14,678	9,666	SRC Stuttgart	5	20	2702,24	-145,69	-7,40	7,798	20,128	8,408
NeedMoreSpeed	6	1	7,00	8,075	+0,311	+0,084	8,204	8,137	DSCReifenS	6	20	2582,28	-265,65	-119,96	8,078	127,057	8,794
DieDigitalen	7	1	6,00	8,199	+0,435	+0,124	13,695	9,162	NeedMoreSpeed	7	20	2578,09	-269,84	-4,19	7,980	300,387	8,795
DSCReifenS	8	1	6,00	8,412	+0,648	+0,213	13,111	9,244	DieDigitalen	8	20	2575,80	-272,13	-2,29	8,009	173,533	8,734

Rennen 1										Rennen 2									
Team	P	S	Rd	ΔP1	ΔPN	Min	Max	Ø		Team	P	S	Rd	ΔP1	ΔPN	Min	Max	Ø	
Racing is Life	1	5	706,23			7,808	10,901	8,090		BOSCH Racing	1	5	716,95			7,640	25,173	7,977	
BOSCH Racing	2	5	687,91	-18,32	-18,32	7,797	142,670	8,326		Racing is Life	2	5	713,80	-3,15	-3,15	7,757	12,019	7,999	
SCD #1	3	5	678,80	-27,43	-9,11	8,091	14,321	8,431		SRC Oeffingen	3	5	681,41	-35,54	-32,39	7,817	14,019	8,399	
SRC Oeffingen	4	5	674,12	-32,11	-4,68	7,867	22,188	8,486		SCD #1	4	5	681,25	-35,70	-0,16	7,938	11,885	8,377	
SRC Stuttgart	5	5	666,31	-39,92	-7,81	7,892	16,189	8,575		SRC Stuttgart	5	5	674,79	-42,16	-6,46	7,798	20,128	8,479	
NeedMoreSpeed	6	5	657,34	-48,89	-8,97	8,102	18,736	8,698		DieDigitalen	6	5	661,84	-55,11	-12,95	8,009	12,693	8,628	
DSCReifenS	7	5	625,30	-80,93	-32,04	8,078	127,057	9,159		DSCReifenS	7	5	639,97	-76,98	-21,87	8,099	38,631	8,939	
DieDigitalen	8	5	619,24	-86,99	-6,06	8,035	14,531	8,889		NeedMoreSpeed	8	5	638,64	-78,31	-1,33	7,980	300,387	8,945	

Rennen 3										Rennen 4									
Team	P	S	Rd	ΔP1	ΔPN	Min	Max	Ø		Team	P	S	Rd	ΔP1	ΔPN	Min	Max	Ø	
BOSCH Racing	1	5	724,40			7,663	11,065	7,912		Racing is Life	1	5	705,57			7,708	93,158	8,106	
Racing is Life	2	5	722,33	-2,07	-2,07	7,676	15,497	7,920		BOSCH Racing	2	5	699,64	-5,93	-5,93	7,692	23,312	8,161	
SCD #1	3	5	691,65	-32,75	-30,68	7,847	10,893	8,243		SCD #1	3	5	694,67	-10,90	-4,97	7,810	11,640	8,220	
SRC Stuttgart	4	5	678,15	-46,25	-13,50	7,904	12,914	8,431		SRC Stuttgart	4	5	682,99	-22,58	-11,68	7,894	12,419	8,377	
SRC Oeffingen	5	5	672,30	-52,10	-5,85	7,910	19,957	8,499		SRC Oeffingen	5	5	681,81	-23,76	-1,18	7,905	12,297	8,387	
DSCReifenS	6	5	648,81	-75,59	-23,49	8,110	22,436	8,812		DSCReifenS	6	5	668,20	-37,37	-13,61	8,081	13,248	8,539	
DieDigitalen	7	5	634,30	-90,10	-14,51	8,062	173,533	9,026		DieDigitalen	7	5	660,42	-45,15	-7,78	8,053	12,891	8,652	
NeedMoreSpeed	8	5	623,92	-100,48	-10,38	8,025	112,137	9,124		NeedMoreSpeed	8	5	658,19	-47,38	-2,23	8,060	21,703	8,680	

Rundenübersicht



Top 20 Statistiken

Schnellste Runde total				Bereinigter Durchschnitt				Bereinigte Standardabweichung ³				Anomalien ²		Ampelstart			Chaossituationen Stintwechsel			
Min	Fahrer	Zeit	B	bØ	Fahrer	Zeit	B	bo	Fahrer	Zeit	B	Anzahl	Fahrer	Min	Fahrer	Zeit	Chaos	Anz.	Stint	Anz.
7,640	Sven	14:27	Gr	7,758	Sven	14:18	Gr	0,047	Wolfi	13:33	Ge	2	WolfgangK	0,224	Markus	15:53	Anz.	268	Anz.	31
7,643	Sven	14:28	Gr	7,766	Sven	17:03	Ge	0,050	Sven	18:13	Bl	3	Sven	0,285	Martin	12:24	Min	3s	Min	2,1m
7,645	Sven	14:27	Gr	7,773	Sergey	20:25	Ge	0,054	Ralf	14:40	Gr	3	Mike	0,288	Matthias	12:24	Max	222s	Max	31,5m
7,649	Sven	14:32	Gr	7,782	Locke	17:50	Or	0,080	Ralf	11:49	Bl	7	Locke	0,298	Jo	15:53	Ø	13s	Ø	5,9m
7,650	Sven	14:28	Gr	7,787	Ralf	17:27	Ge	0,082	Locke	17:50	Or	9	Findus	0,298	Martin	19:15	-	-	-	-
7,654	Sven	14:31	Gr	7,789	Sven	18:13	Bl	0,084	Mike	11:04	Bl	9	Ralf	0,316	Martin	15:53	-	-	-	-
7,655	Sven	14:33	Gr	7,801	Ralf	20:49	Ge	0,084	Wolfi	11:04	Gr	13	Jochen	0,360	StefenT	15:53	-	-	-	-
7,655	Sven	14:27	Gr	7,807	Ralf	14:40	Gr	0,088	Sergey	20:25	Ge	13	Sergey	0,360	Lukas	09:07	-	-	-	-
7,658	Sven	14:31	Gr	7,817	Locke	18:13	Gr	0,093	Findus	17:27	Gr	15	Berthold	0,361	StefenT	12:24	-	-	-	-
7,658	Sven	14:30	Gr	7,846	Wolfi	13:33	Ge	0,102	Locke	21:35	Gr	16	Dominik	0,416	Uwe	15:53	-	-	-	-
7,659	Sven	14:31	Gr	7,853	Sergey	17:50	Gr	0,105	Dominik	09:29	Gr	22	Wolfi	0,445	Thomas	19:15	-	-	-	-
7,662	Sven	14:26	Gr	7,872	Locke	21:13	Or	0,108	Sven	17:03	Ge	25	Lukas	0,459	StefenT	19:15	-	-	-	-
7,662	Sven	14:28	Gr	7,884	Ralf	21:58	Bl	0,119	ThomasK	13:33	Or	26	Thomas	0,486	Stefan	12:24	-	-	-	-
7,662	Sven	14:26	Gr	7,887	Wolfi	17:27	Or	0,129	Findus	16:17	Ro	29	Juergen	0,531	Udo	12:25	-	-	-	-

7,663	Sven	17:05	Ge	7,896	Wolfi	14:40	Bl	0,129	Locke	14:18	Or	30	Jo	0,553	Martin	09:07	-	-	-	-
7,664	Sven	14:34	Gr	7,907	Ralf	13:55	Ge	0,131	StefenT	19:39	Ge	31	Udo	0,598	Markus	09:07	-	-	-	-
7,666	Sven	14:32	Gr	7,908	WolfgangK	18:36	Bl	0,135	Locke	11:04	Or	31	ThomasK	0,645	StefenT	09:07	-	-	-	-
7,668	Sven	14:19	Gr	7,909	Locke	21:35	Gr	0,135	Lukas	09:07	Bl	32	Stephan	Frühstart	Dominik	19:15	-	-	-	-
7,670	Sven	14:30	Gr	7,912	Findus	20:49	Gr	0,137	Sergey	16:39	Ro	39	Martin	Frühstart	Juergen	09:07	-	-	-	-
7,676	Locke	17:52	Or	7,916	Sergey	10:18	Ge	0,139	Sergey	11:25	Bl	39	Uwe	Frühstart	Markus	19:15	-	-	-	-

Top 10 Schnellste Runde pro Spur

Rot			Blau			Gelb			Gruen			Orange		
Min	Fahrer	Zeit	Min	Fahrer	Zeit	Min	Fahrer	Zeit	Min	Fahrer	Zeit	Min	Fahrer	Zeit
7,798	Sven	13:11	7,719	Sven	18:23	7,663	Sven	17:05	7,640	Sven	14:27	7,676	Locke	17:52
7,808	Sergey	16:42	7,721	Sven	18:13	7,692	Sergey	20:30	7,643	Sven	14:28	7,704	Locke	18:00
7,813	Sven	13:10	7,725	Sven	18:28	7,693	Sergey	20:30	7,645	Sven	14:27	7,720	Locke	17:58
7,828	Sven	13:11	7,728	Sven	18:28	7,696	Sven	17:12	7,649	Sven	14:32	7,720	Locke	17:52
7,828	WolfgangK	10:24	7,739	Sven	18:27	7,696	Sven	17:10	7,650	Sven	14:28	7,725	Locke	17:55
7,838	Sven	13:30	7,740	Sven	18:29	7,705	Sergey	20:31	7,654	Sven	14:31	7,725	Locke	18:03
7,838	Sven	13:26	7,745	Sven	18:19	7,706	Sven	17:23	7,655	Sven	14:27	7,725	Locke	17:51
7,838	Wolfi	20:06	7,746	Sven	18:14	7,708	Ralf	21:09	7,655	Sven	14:33	7,726	Locke	17:53
7,845	Sergey	16:42	7,747	Sven	18:15	7,709	Sven	17:04	7,658	Sven	14:30	7,728	Locke	17:52
7,846	Sven	13:24	7,749	Sven	18:33	7,711	Sven	17:06	7,658	Sven	14:31	7,730	Locke	17:51

Stints

09:07	B	Fahrer	Rd	Min	Max	Ø	95% ¹	σ ³	Anomalien ²	bØ	b95%	bσ
SRC Oeffingen	Bl	Lukas	131	8,080	22,188	8,648	8,657	1,877	6/5%	8,305	8,584	0,135
NeedMoreSpeed	Or	Juergen	132	8,151	18,736	8,576	8,745	1,073	4/3%	8,413	8,680	0,181
DSCReifenS	Ro	StefenT	107	8,759	127,057	10,649	12,652	11,461	16/15%	9,078	9,609	0,244
SRC Stuttgart	Gr	Markus	133	7,892	13,345	8,513	10,720	0,971	18/14%	8,146	8,504	0,258
DieDigitalen	Ge	Martin	125	8,425	13,191	9,092	10,949	0,787	11/9%	8,848	9,399	0,275
09:29	B	Fahrer	Rd	Min	Max	Ø	95% ¹	σ ³	Anomalien ²	bØ	b95%	bσ
NeedMoreSpeed	Gr	Dominik	138	8,102	11,810	8,248	8,475	0,105	1/1%	8,222	8,469	0,105
SRC Stuttgart	Bl	Stefan	133	8,096	11,782	8,519	10,497	0,737	8/6%	8,361	9,634	0,387
DieDigitalen	Or	Luis	125	8,494	12,954	9,051	10,990	0,833	13/10%	8,799	9,338	0,234
DSCReifenS	Ge	Stephan	133	8,078	13,747	8,525	9,035	0,751	5/4%	8,399	8,861	0,197
SCD #1	Ro	Findus	135	8,147	14,321	8,401	8,603	0,549	1/1%	8,357	8,575	0,173
09:52	B	Fahrer	Rd	Min	Max	Ø	95% ¹	σ ³	Anomalien ²	bØ	b95%	bσ
DieDigitalen	Gr	Luis	102	8,347	12,949	9,052	11,019	0,830	14/14%	8,756	9,382	0,291
SCD #1	Ge	Jochen	136	8,112	11,210	8,396	9,445	0,441	3/2%	8,347	9,219	0,302
DSCReifenS	Or	Schweiky	130	8,167	16,747	8,772	10,601	1,164	12/9%	8,482	9,522	0,338
NeedMoreSpeed	Bl	Jo	128	8,427	17,348	8,898	10,843	1,312	7/5%	8,630	8,957	0,248
BOSCH Racing	Ro	Wolfi	120	7,971	142,670	9,512	9,962	12,347	5/4%	8,254	8,838	0,341
10:18	B	Fahrer	Rd	Min	Max	Ø	95% ¹	σ ³	Anomalien ²	bØ	b95%	bσ
DSCReifenS	Gr	Danni	126	8,270	13,443	9,014	11,214	1,052	20/16%	8,622	9,603	0,334
SCD #1	Or	Findus	136	8,161	9,658	8,349	8,562	0,149	0/0%	8,349	8,562	0,149
BOSCH Racing	Ge	Sergey	143	7,797	13,849	7,958	8,023	0,530	1/1%	7,916	8,022	0,183
Racing is Life	Ro	WolfgangK	139	7,828	10,767	8,164	8,368	0,306	1/1%	8,145	8,307	0,211

DieDigitalen	Bl	Ingo	133	8,035	14,531	8,559	11,053	1,040	10/8%	8,287	8,587	0,142
10:42	B	Fahrer	Rd	Min	Max	Ø	95% ¹	σ ³	Anomalien ²	bØ	b95%	bo
SRC Oeffingen	Ro	Matthias	133	8,046	15,619	8,572	10,714	1,096	10/8%	8,305	9,417	0,363
Racing is Life	Ge	Ralf	141	7,919	10,901	8,046	8,172	0,340	2/1%	8,009	8,148	0,143
SCD #1	Gr	ThomasK	132	8,205	11,443	8,618	10,261	0,565	7/5%	8,494	8,825	0,211
BOSCH Racing	Or	Sven	140	7,969	12,488	8,126	8,272	0,163	1/1%	8,095	8,271	0,163
DSCReifenS	Bl	Stephan	129	8,169	18,161	8,827	11,386	1,388	11/9%	8,499	8,915	0,256
11:04	B	Fahrer	Rd	Min	Max	Ø	95% ¹	σ ³	Anomalien ²	bØ	b95%	bo
SRC Stuttgart	Ro	Berthold	132	8,246	16,189	8,620	9,188	0,819	6/5%	8,471	8,876	0,171
Racing is Life	Or	Locke	141	7,943	9,384	8,040	8,218	0,135	0/0%	8,040	8,218	0,135
BOSCH Racing	Gr	Wolfi	142	7,815	15,369	8,016	8,193	0,398	3/2%	7,917	8,114	0,084
SCD #1	Bl	Miike	138	8,091	8,691	8,219	8,395	0,084	0/0%	8,219	8,395	0,084
SRC Oeffingen	Ge	Uwe	135	8,020	12,620	8,431	10,263	0,645	7/5%	8,291	8,532	0,247
11:25	B	Fahrer	Rd	Min	Max	Ø	95% ¹	σ ³	Anomalien ²	bØ	b95%	bo
Racing is Life	Gr	Locke	143	7,808	10,418	7,965	8,209	0,324	2/1%	7,931	8,171	0,164
BOSCH Racing	Bl	Sergey	142	7,874	8,890	7,973	8,126	0,139	0/0%	7,973	8,126	0,139
SRC Stuttgart	Ge	Nils	132	7,934	11,776	8,617	10,442	0,772	16/12%	8,358	9,709	0,433
SRC Oeffingen	Or	Thomas	137	7,921	16,255	8,293	9,265	0,435	3/2%	8,191	8,518	0,244
NeedMoreSpeed	Ro	Udo	127	8,573	15,459	8,932	9,886	0,742	5/4%	8,813	9,021	0,196
11:49	B	Fahrer	Rd	Min	Max	Ø	95% ¹	σ ³	Anomalien ²	bØ	b95%	bo
NeedMoreSpeed	Ge	Juergen	132	8,143	16,622	8,608	9,934	1,099	6/5%	8,406	9,155	0,305
SRC Oeffingen	Gr	Lukas	138	7,867	12,283	8,249	10,268	0,703	8/6%	8,095	9,184	0,299
DieDigitalen	Ro	Ingo	134	8,196	10,776	8,488	9,006	0,380	3/2%	8,439	8,713	0,204
SRC Stuttgart	Or	Markus	136	7,952	14,725	8,356	10,076	0,642	8/6%	8,179	8,385	0,276
Racing is Life	Bl	Ralf	142	7,911	8,721	8,011	8,113	0,080	0/0%	8,011	8,113	0,080
12:24	B	Fahrer	Rd	Min	Max	Ø	95% ¹	σ ³	Anomalien ²	bØ	b95%	bo
SRC Oeffingen	Bl	Matthias	138	7,905	12,239	8,236	9,964	0,729	7/5%	8,090	8,248	0,336
DSCReifenS	Ro	StefenT	124	8,529	15,628	9,139	10,848	0,988	13/10%	8,864	9,140	0,248
DieDigitalen	Ge	Martin	130	8,306	10,954	8,745	9,982	0,506	6/5%	8,649	9,092	0,258
SRC Stuttgart	Gr	Stefan	135	7,905	11,510	8,430	10,137	0,738	13/10%	8,228	9,527	0,397
NeedMoreSpeed	Or	Udo	135	8,003	14,258	8,389	8,775	0,565	2/1%	8,324	8,678	0,242
12:47	B	Fahrer	Rd	Min	Max	Ø	95% ¹	σ ³	Anomalien ²	bØ	b95%	bo
NeedMoreSpeed	Gr	Juergen	138	7,980	12,826	8,224	9,591	0,744	5/4%	8,089	8,368	0,254
DSCReifenS	Ge	Danni	124	8,169	38,631	9,185	11,092	2,832	22/18%	8,554	9,398	0,349
DieDigitalen	Or	Luis	129	8,285	11,670	8,778	10,598	0,667	12/9%	8,572	9,108	0,232
SRC Stuttgart	Bl	Stefan	131	8,011	20,128	8,658	10,471	1,343	12/9%	8,347	9,768	0,440
SCD #1	Ro	Findus	137	8,002	11,885	8,272	8,381	0,363	1/1%	8,245	8,364	0,178
13:10	B	Fahrer	Rd	Min	Max	Ø	95% ¹	σ ³	Anomalien ²	bØ	b95%	bo
DieDigitalen	Gr	Martin	132	8,294	11,730	8,567	9,154	0,366	3/2%	8,517	9,052	0,195
SCD #1	Ge	Jochen	135	8,072	11,009	8,381	9,606	0,476	4/3%	8,315	8,820	0,290
NeedMoreSpeed	Bl	Dominik	137	8,083	16,743	8,311	8,505	0,780	2/1%	8,233	8,503	0,224
DSCReifenS	Or	Schweiky	130	8,099	12,495	8,735	11,406	0,892	14/11%	8,475	9,694	0,412
BOSCH Racing	Ro	Sven	143	7,798	9,936	7,959	8,045	0,205	0/0%	7,959	8,045	0,205
13:33	B	Fahrer	Rd	Min	Max	Ø	95% ¹	σ ³	Anomalien ²	bØ	b95%	bo

DieDigitalen	Bl	Ingo	136	8,009	12,693	8,355	10,236	0,745	8/6%	8,180	8,505	0,191
SCD #1	Or	ThomasK	131	8,325	11,586	8,679	10,444	0,548	8/6%	8,536	8,858	0,119
DSCReifenS	Gr	Danni	130	8,154	18,247	8,740	10,909	0,775	13/10%	8,435	8,937	0,269
BOSCH Racing	Ge	Wolfi	145	7,768	7,987	7,846	7,935	0,047	0/0%	7,846	7,935	0,047
Racing is Life	Ro	WolfgangK	140	7,886	9,554	8,088	8,235	0,210	0/0%	8,088	8,235	0,210
13:55	B	Fahrer	Rd	Min	Max	Ø	95% ¹	σ ³	Anomalien ²	bØ	b95%	bσ
Racing is Life	Ge	Ralf	143	7,845	12,019	7,966	8,078	0,469	3/2%	7,907	8,028	0,203
SRC Oeffingen	Ro	Uwe	131	8,231	13,156	8,704	10,489	0,722	11/8%	8,502	8,767	0,143
DSCReifenS	Bl	Stephan	131	8,135	16,368	8,644	11,045	0,779	11/8%	8,374	8,691	0,229
SCD #1	Gr	Findus	141	7,938	10,755	8,083	8,322	0,336	2/1%	8,048	8,274	0,166
BOSCH Racing	Or	Sergey	140	7,780	25,173	8,137	8,404	1,574	4/3%	7,934	8,155	0,205
14:18	B	Fahrer	Rd	Min	Max	Ø	95% ¹	σ ³	Anomalien ²	bØ	b95%	bσ
SRC Stuttgart	Ro	Berthold	135	8,186	9,897	8,420	8,708	0,189	0/0%	8,420	8,708	0,189
Racing is Life	Or	Locke	142	7,853	9,731	7,990	8,192	0,129	0/0%	7,990	8,192	0,129
BOSCH Racing	Gr	Sven	146	7,640	9,724	7,758	7,861	0,225	0/0%	7,758	7,861	0,225
SCD #1	Bl	Mike	137	8,104	10,506	8,312	8,537	0,325	3/2%	8,267	8,409	0,188
SRC Oeffingen	Ge	Thomas	136	7,975	11,686	8,359	10,403	0,613	8/6%	8,209	8,298	0,215
14:40	B	Fahrer	Rd	Min	Max	Ø	95% ¹	σ ³	Anomalien ²	bØ	b95%	bσ
BOSCH Racing	Bl	Wolfi	142	7,794	13,044	7,972	8,286	0,588	3/2%	7,896	8,174	0,247
Racing is Life	Gr	Ralf	145	7,757	8,080	7,807	7,929	0,054	0/0%	7,807	7,929	0,054
SRC Stuttgart	Ge	Nils	134	7,883	12,008	8,498	10,459	0,807	13/10%	8,262	9,472	0,407
SRC Oeffingen	Or	Lukas	139	7,948	10,863	8,176	8,431	0,271	2/1%	8,140	8,394	0,188
NeedMoreSpeed	Ro	Jo	93	8,351	300,387	12,166	10,319	30,392	8/9%	8,821	9,645	0,325
15:02	B	Fahrer	Rd	Min	Max	Ø	95% ¹	σ ³	Anomalien ²	bØ	b95%	bσ
Racing is Life	Bl	WolfgangK	143	7,802	9,849	7,925	8,144	0,284	0/0%	7,925	8,144	0,284
NeedMoreSpeed	Ge	Udo	135	8,110	11,437	8,398	8,772	0,429	4/3%	8,330	8,658	0,164
SRC Oeffingen	Gr	Matthias	137	7,817	14,019	8,293	10,269	0,910	11/8%	8,058	9,197	0,351
DieDigitalen	Ro	Ingo	134	8,159	11,035	8,452	9,841	0,512	5/4%	8,369	9,115	0,289
SRC Stuttgart	Or	Markus	139	7,798	10,352	8,152	9,570	0,491	5/4%	8,076	8,470	0,291
15:53	B	Fahrer	Rd	Min	Max	Ø	95% ¹	σ ³	Anomalien ²	bØ	b95%	bσ
NeedMoreSpeed	Or	Jo	134	8,089	10,989	8,460	8,749	0,459	4/3%	8,391	8,678	0,222
DSCReifenS	Ro	StefenT	125	8,449	14,949	9,062	10,968	0,986	15/12%	8,761	9,320	0,287
SRC Oeffingen	Bl	Uwe	134	8,123	11,162	8,477	9,525	0,483	6/4%	8,387	8,906	0,237
DieDigitalen	Ge	Martin	131	8,259	11,580	8,677	9,581	0,537	6/5%	8,573	8,957	0,229
SRC Stuttgart	Gr	Markus	136	7,904	12,363	8,349	10,073	0,799	8/6%	8,171	9,453	0,393
16:17	B	Fahrer	Rd	Min	Max	Ø	95% ¹	σ ³	Anomalien ²	bØ	b95%	bσ
DSCReifenS	Ge	Schweiky	128	8,152	20,520	8,845	10,675	1,344	14/11%	8,516	9,856	0,420
NeedMoreSpeed	Gr	Udo	134	8,025	12,709	8,495	10,313	0,786	10/7%	8,301	9,076	0,318
SRC Stuttgart	Bl	Stefan	135	8,008	11,266	8,412	10,261	0,632	7/5%	8,291	9,405	0,362
DieDigitalen	Or	Luis	128	8,372	12,920	8,874	10,684	0,701	12/9%	8,672	9,065	0,218
SCD #1	Ro	Findus	139	7,926	10,893	8,157	8,218	0,272	1/1%	8,137	8,193	0,129
16:39	B	Fahrer	Rd	Min	Max	Ø	95% ¹	σ ³	Anomalien ²	bØ	b95%	bσ
DSCReifenS	Or	Schweiky	129	8,147	14,794	8,801	11,634	1,176	16/12%	8,432	9,711	0,439
SCD #1	Ge	Jochen	138	7,931	10,828	8,186	9,743	0,494	3/2%	8,132	9,061	0,341

DieDigitalen	Gr	Luis	124	8,444	12,411	9,142	11,209	0,884	20/16%	8,779	9,219	0,228
NeedMoreSpeed	Bl	Juergen	110	8,110	112,137	10,036	9,583	10,212	4/4%	8,310	8,648	0,242
BOSCH Racing	Ro	Sergey	142	7,808	11,065	8,013	8,196	0,232	2/1%	7,976	8,170	0,137
17:03	B	Fahrer	Rd	Min	Max	Ø	95% ¹	σ ³	Anomalien ²	bØ	b95%	bo
SCD #1	Or	ThomasK	132	8,285	10,798	8,621	10,317	0,494	9/7%	8,492	8,896	0,195
DieDigitalen	Bl	Ingo	136	8,062	11,108	8,390	9,537	0,475	2/1%	8,355	9,417	0,381
DSCReifenS	Gr	Danni	132	8,110	22,436	8,640	10,045	0,547	7/5%	8,441	9,397	0,351
BOSCH Racing	Ge	Sven	147	7,663	8,954	7,766	7,829	0,108	0/0%	7,766	7,829	0,108
Racing is Life	Ro	WolfgangK	142	7,865	9,615	7,995	8,130	0,182	0/0%	7,995	8,130	0,182
17:27	B	Fahrer	Rd	Min	Max	Ø	95% ¹	σ ³	Anomalien ²	bØ	b95%	bo
Racing is Life	Ge	Ralf	145	7,736	15,497	7,840	7,994	0,188	1/1%	7,787	7,989	0,189
SCD #1	Gr	Findus	142	7,847	10,479	7,997	8,261	0,228	1/1%	7,979	8,224	0,093
BOSCH Racing	Or	Wolfi	144	7,730	10,877	7,923	8,042	0,405	2/1%	7,887	8,011	0,266
DSCReifenS	Bl	Stephan	134	8,130	13,811	8,464	9,000	0,661	4/3%	8,365	8,753	0,214
SRC Oeffingen	Ro	Thomas	132	8,152	16,996	8,591	10,052	0,935	7/5%	8,419	8,635	0,262
17:50	B	Fahrer	Rd	Min	Max	Ø	95% ¹	σ ³	Anomalien ²	bØ	b95%	bo
SRC Oeffingen	Ge	Lukas	138	7,934	11,015	8,217	9,919	0,576	5/4%	8,132	9,334	0,378
SCD #1	Bl	Mike	140	7,930	9,961	8,102	8,312	0,240	0/0%	8,102	8,312	0,240
Racing is Life	Or	Locke	146	7,676	8,432	7,782	7,942	0,082	0/0%	7,782	7,942	0,082
SRC Stuttgart	Ro	Berthold	134	8,078	12,914	8,457	9,413	0,579	4/3%	8,372	8,854	0,276
BOSCH Racing	Gr	Sergey	145	7,699	10,000	7,853	7,991	0,231	0/0%	7,853	7,991	0,231
18:13	B	Fahrer	Rd	Min	Max	Ø	95% ¹	σ ³	Anomalien ²	bØ	b95%	bo
SRC Stuttgart	Ge	Nils	136	7,926	11,020	8,369	10,023	0,675	7/5%	8,256	9,805	0,478
SRC Oeffingen	Or	Matthias	136	7,910	11,694	8,340	9,997	0,700	6/4%	8,239	9,642	0,518
Racing is Life	Gr	Locke	145	7,708	11,388	7,861	8,045	0,441	2/1%	7,817	8,030	0,233
BOSCH Racing	Bl	Sven	146	7,719	7,957	7,789	7,876	0,050	0/0%	7,789	7,876	0,050
NeedMoreSpeed	Ro	Dominik	120	8,332	80,834	9,485	9,794	1,935	4/3%	8,628	9,014	0,263
18:36	B	Fahrer	Rd	Min	Max	Ø	95% ¹	σ ³	Anomalien ²	bØ	b95%	bo
SRC Oeffingen	Gr	Uwe	132	8,123	19,957	8,629	10,333	0,968	9/7%	8,343	9,139	0,295
NeedMoreSpeed	Ge	Jo	125	8,121	37,939	9,069	10,653	3,284	8/6%	8,440	8,770	0,213
DieDigitalen	Ro	Ingo	115	8,144	173,533	9,904	9,711	15,466	4/3%	8,407	8,916	0,273
Racing is Life	Bl	WolfgangK	144	7,778	9,725	7,908	8,110	0,198	0/0%	7,908	8,110	0,198
SRC Stuttgart	Or	Markus	137	7,955	11,796	8,322	10,133	0,651	8/6%	8,184	8,365	0,313
19:14	B	Fahrer	Rd	Min	Max	Ø	95% ¹	σ ³	Anomalien ²	bØ	b95%	bo
SRC Oeffingen	Bl	Thomas	135	8,099	11,756	8,412	9,517	0,504	4/3%	8,343	8,669	0,296
DieDigitalen	Ge	Martin	133	8,190	10,924	8,553	8,838	0,357	3/2%	8,507	8,770	0,183
DSCReifenS	Ro	StefenT	128	8,362	12,796	8,841	10,191	0,686	7/5%	8,701	9,397	0,277
SRC Stuttgart	Gr	Markus	139	7,906	11,483	8,194	9,530	0,488	3/2%	8,129	8,523	0,338
NeedMoreSpeed	Or	Dominik	133	8,060	13,964	8,508	9,962	0,505	7/5%	8,374	8,715	0,281
19:39	B	Fahrer	Rd	Min	Max	Ø	95% ¹	σ ³	Anomalien ²	bØ	b95%	bo
NeedMoreSpeed	Gr	Jo	134	8,075	19,211	8,473	9,644	0,999	3/2%	8,363	8,631	0,268
DSCReifenS	Ge	StefenT	134	8,183	12,026	8,449	8,850	0,471	4/3%	8,372	8,759	0,131
DieDigitalen	Or	Luis	125	8,453	12,891	9,053	11,040	0,804	15/12%	8,774	9,090	0,176
SRC Stuttgart	Bl	Stefan	136	7,989	11,821	8,367	9,948	0,613	5/4%	8,272	9,210	0,360

SCD #1	Ro	Findus	139	7,907	11,640	8,143	8,186	0,339	1/1%	8,117	8,171	0,148
20:02	B	Fahrer	Rd	Min	Max	Ø	95%¹	σ³	Anomalien²	bØ	b95%	bσ
SCD #1	Ge	Jochen	139	7,941	11,228	8,198	9,448	0,445	3/2%	8,147	8,441	0,286
DSCReifenS	Or	Schweiky	135	8,081	11,665	8,408	9,526	0,581	5/4%	8,310	9,359	0,293
DieDigitalen	Gr	Martin	132	8,191	11,617	8,592	10,204	0,581	10/8%	8,436	8,730	0,190
NeedMoreSpeed	Bl	Udo	128	8,213	21,703	8,853	10,330	1,290	10/8%	8,611	9,175	0,287
BOSCH Racing	Ro	Wolfi	140	7,838	10,703	8,107	8,972	0,432	3/2%	8,058	8,256	0,268
20:25	B	Fahrer	Rd	Min	Max	Ø	95%¹	σ³	Anomalien²	bØ	b95%	bσ
DieDigitalen	Bl	Ingo	136	8,053	11,837	8,345	10,117	0,543	7/5%	8,225	8,562	0,157
DSCReifenS	Gr	Danni	134	8,119	13,248	8,455	10,033	0,675	7/5%	8,317	8,749	0,240
BOSCH Racing	Ge	Sergey	144	7,692	18,595	7,848	7,932	0,906	1/1%	7,773	7,931	0,088
SCD #1	Or	ThomasK	133	8,020	11,247	8,545	10,102	0,572	7/5%	8,427	8,747	0,253
Racing is Life	Ro	WolfgangK	131	7,872	93,158	8,678	8,122	7,470	1/1%	8,028	8,122	0,241
20:49	B	Fahrer	Rd	Min	Max	Ø	95%¹	σ³	Anomalien²	bØ	b95%	bσ
BOSCH Racing	Or	Wolfi	136	7,944	23,312	8,356	9,936	1,487	6/4%	8,133	9,403	0,387
DSCReifenS	Bl	Stephan	137	8,119	10,100	8,306	8,757	0,281	1/1%	8,292	8,745	0,238
Racing is Life	Ge	Ralf	146	7,708	9,681	7,801	7,928	0,192	0/0%	7,801	7,928	0,192
SRC Oeffingen	Ro	Lukas	135	8,129	10,854	8,420	9,311	0,422	4/3%	8,363	8,841	0,262
SCD #1	Gr	Findus	143	7,810	10,851	7,949	8,259	0,346	2/1%	7,912	8,123	0,148
21:13	B	Fahrer	Rd	Min	Max	Ø	95%¹	σ³	Anomalien²	bØ	b95%	bσ
SCD #1	Bl	Mike	140	7,948	9,434	8,110	8,261	0,181	0/0%	8,110	8,261	0,181
SRC Oeffingen	Ge	Matthias	139	7,905	11,291	8,194	9,951	0,534	5/4%	8,105	8,588	0,368
Racing is Life	Or	Locke	144	7,730	10,404	7,905	8,132	0,329	2/1%	7,872	8,053	0,175
SRC Stuttgart	Ro	Berthold	134	8,082	12,057	8,480	9,328	0,511	5/4%	8,397	9,006	0,246
BOSCH Racing	Gr	Sven	141	7,795	10,714	8,051	9,511	0,489	2/1%	8,013	9,139	0,372
21:35	B	Fahrer	Rd	Min	Max	Ø	95%¹	σ³	Anomalien²	bØ	b95%	bσ
NeedMoreSpeed	Ro	Juergen	129	8,368	12,330	8,814	10,403	0,638	10/8%	8,653	9,306	0,287
BOSCH Racing	Bl	Sergey	138	7,934	12,908	8,225	9,699	0,634	4/3%	8,133	8,438	0,305
Racing is Life	Gr	Locke	143	7,750	10,177	7,925	8,134	0,215	1/1%	7,909	8,105	0,102
SRC Stuttgart	Ge	Nils	134	7,986	12,419	8,460	10,092	0,726	8/6%	8,316	9,611	0,414
SRC Oeffingen	Or	Uwe	135	8,015	11,104	8,387	9,753	0,482	6/4%	8,293	8,585	0,191
21:58	B	Fahrer	Rd	Min	Max	Ø	95%¹	σ³	Anomalien²	bØ	b95%	bσ
SRC Oeffingen	Gr	Thomas	137	8,035	12,297	8,279	8,603	0,558	4/3%	8,189	8,476	0,170
Racing is Life	Bl	Ralf	141	7,770	25,862	8,052	9,254	1,582	3/2%	7,884	8,380	0,314
SRC Stuttgart	Or	Markus	139	7,894	11,797	8,150	9,761	0,600	4/3%	8,071	9,470	0,412
DieDigitalen	Ro	Ingo	134	8,105	11,440	8,488	10,226	0,600	7/5%	8,362	8,833	0,265
NeedMoreSpeed	Ge	Dominik	134	8,247	13,287	8,504	8,840	0,477	2/1%	8,455	8,706	0,187

Hinweise: ¹ In der Statistik bezeichnet man für eine Wahrscheinlichkeitsfunktion das p%-Quantil (oder auch p-tes Perzentil oder Fraktile) als jenen Wert des Ereignisraumes, dem ein Wert von p% der Verteilungsfunktion zugeordnet ist. Es sind dann p% der Beobachtungen oder der Grundgesamtheit kleiner als das p%-Quantil. - ² Rundenzeiten größer 10,000s werden als Anomalien gewertet - ³ Standardabweichung: Streuung der Rundenzeiten um ihren Mittelwert - **Allgemeine Hinweise:** die "b"-Werte auf der rechten Seite der Tabelle sind sog. "bereinigte" Werte. Bei der Berechnung werden Anomalien herausgerechnet. Mit einem * werden Gastfahrer gekennzeichnet, die nicht in die engültige Wertung übernommen werden.